

MAVID Alignment - HOMO vs. All

Alignment 1
Seqs: homo/pig
Criteria: 92%, 100 bp
Regions: 3

Alignment 2
Seqs: homo/cow
Criteria: 89%, 100 bp
Regions: 3

Alignment 3
Seqs: homo/mouse
Criteria: 87%, 100 bp
Regions: 5

Alignment 4
Seqs: homo/frog
Criteria: 76%, 100 bp
Regions: 7

Alignment 5
Seqs: homo/rat
Criteria: 87%, 100 bp
Regions: 6

Alignment 6
Seqs: homo/trout
Criteria: 77%, 100 bp
Regions: 1

Alignment 7
Seqs: homo/danio
Criteria: 77%, 100 bp
Regions: 6

Alignment 8
Seqs: homo/fly
Criteria: 68%, 100 bp
Regions: 5

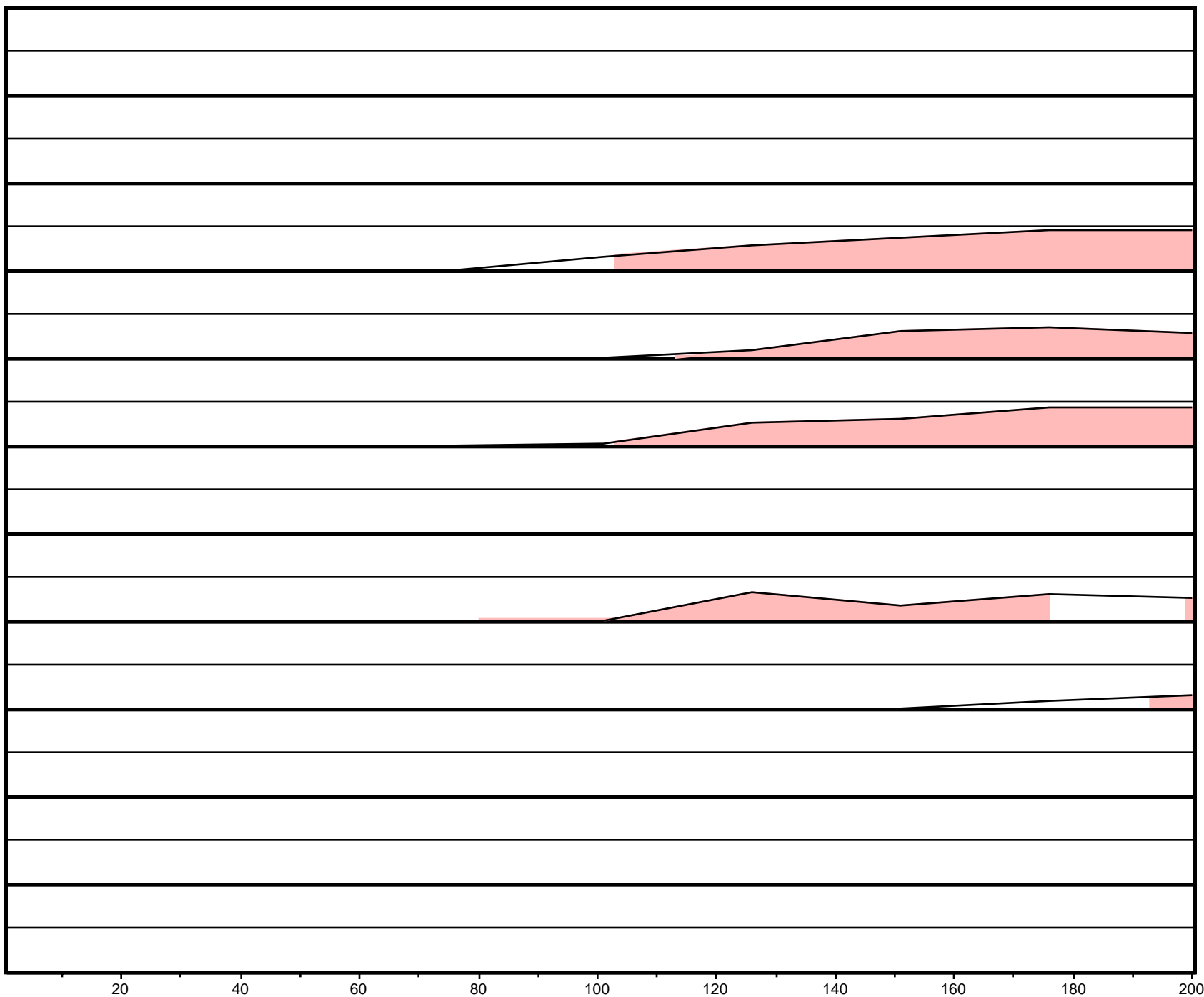
Alignment 9
Seqs: homo/celegans
Criteria: 65%, 100 bp
Regions: 1

Alignment 10
Seqs: homo/flower
Criteria: 64%, 100 bp
Regions: 3

Alignment 11
Seqs: homo/soy
Criteria: 67%, 100 bp
Regions: 1

X-axis: homo
Resolution: 25
Window size: 100 bp

gene
 exon
 UTR
 CNS



MAVID Alignment - HOMO vs. All

Alignment 1
Seqs: homo/pig
Criteria: 92%, 100 bp
Regions: 3

Alignment 2
Seqs: homo/cow
Criteria: 89%, 100 bp
Regions: 3

Alignment 3
Seqs: homo/mouse
Criteria: 87%, 100 bp
Regions: 5

Alignment 4
Seqs: homo/frog
Criteria: 76%, 100 bp
Regions: 7

Alignment 5
Seqs: homo/rat
Criteria: 87%, 100 bp
Regions: 6

Alignment 6
Seqs: homo/trout
Criteria: 77%, 100 bp
Regions: 1

Alignment 7
Seqs: homo/danio
Criteria: 77%, 100 bp
Regions: 6

Alignment 8
Seqs: homo/fly
Criteria: 68%, 100 bp
Regions: 5

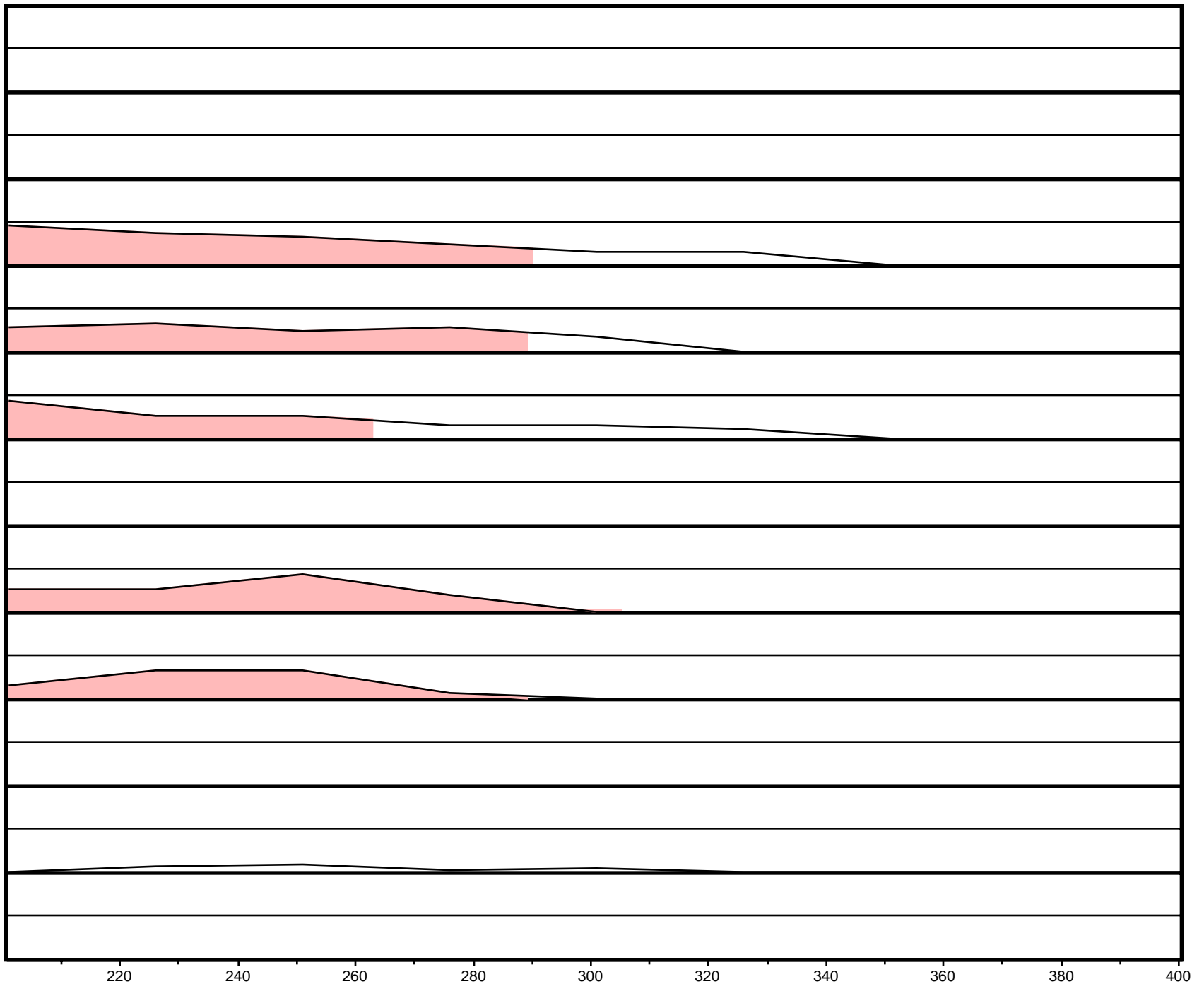
Alignment 9
Seqs: homo/celegans
Criteria: 65%, 100 bp
Regions: 1

Alignment 10
Seqs: homo/flower
Criteria: 64%, 100 bp
Regions: 3

Alignment 11
Seqs: homo/soy
Criteria: 67%, 100 bp
Regions: 1

X-axis: homo
Resolution: 25
Window size: 100 bp

gene
exon
UTR
CNS



MAVID Alignment - HOMO vs. All

Alignment 1
Seqs: homo/pig
Criteria: 92%, 100 bp
Regions: 3

Alignment 2
Seqs: homo/cow
Criteria: 89%, 100 bp
Regions: 3

Alignment 3
Seqs: homo/mouse
Criteria: 87%, 100 bp
Regions: 5

Alignment 4
Seqs: homo/frog
Criteria: 76%, 100 bp
Regions: 7

Alignment 5
Seqs: homo/rat
Criteria: 87%, 100 bp
Regions: 6

Alignment 6
Seqs: homo/trout
Criteria: 77%, 100 bp
Regions: 1

Alignment 7
Seqs: homo/danio
Criteria: 77%, 100 bp
Regions: 6

Alignment 8
Seqs: homo/fly
Criteria: 68%, 100 bp
Regions: 5

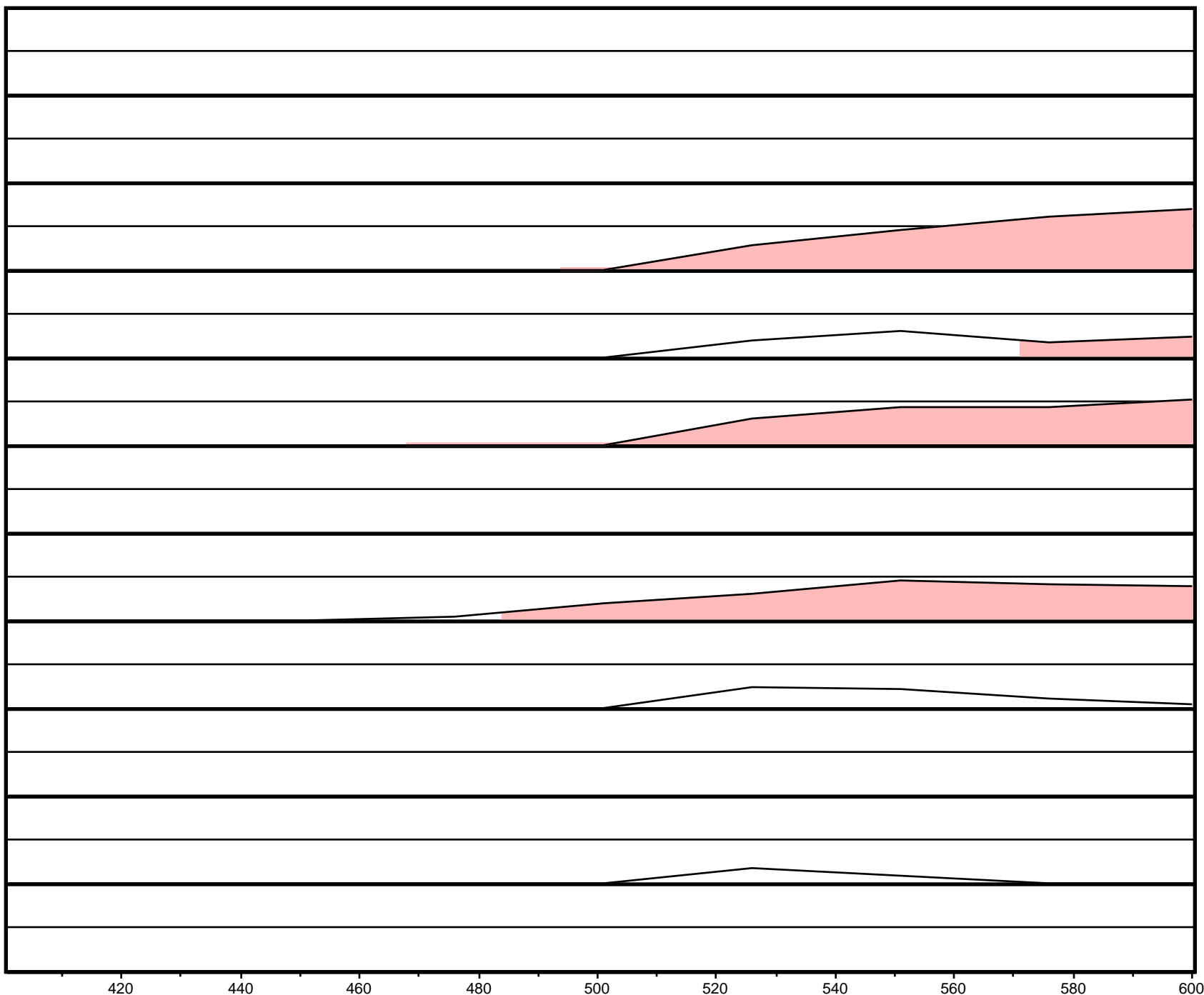
Alignment 9
Seqs: homo/celegans
Criteria: 65%, 100 bp
Regions: 1

Alignment 10
Seqs: homo/flower
Criteria: 64%, 100 bp
Regions: 3

Alignment 11
Seqs: homo/soy
Criteria: 67%, 100 bp
Regions: 1

X-axis: homo
Resolution: 25
Window size: 100 bp

▶ gene
■ exon
■ UTR
■ CNS



MAVID Alignment - HOMO vs. All

Alignment 1
Seqs: homo/pig
Criteria: 92%, 100 bp
Regions: 3

Alignment 2
Seqs: homo/cow
Criteria: 89%, 100 bp
Regions: 3

Alignment 3
Seqs: homo/mouse
Criteria: 87%, 100 bp
Regions: 5

Alignment 4
Seqs: homo/frog
Criteria: 76%, 100 bp
Regions: 7

Alignment 5
Seqs: homo/rat
Criteria: 87%, 100 bp
Regions: 6

Alignment 6
Seqs: homo/trout
Criteria: 77%, 100 bp
Regions: 1

Alignment 7
Seqs: homo/danio
Criteria: 77%, 100 bp
Regions: 6

Alignment 8
Seqs: homo/fly
Criteria: 68%, 100 bp
Regions: 5

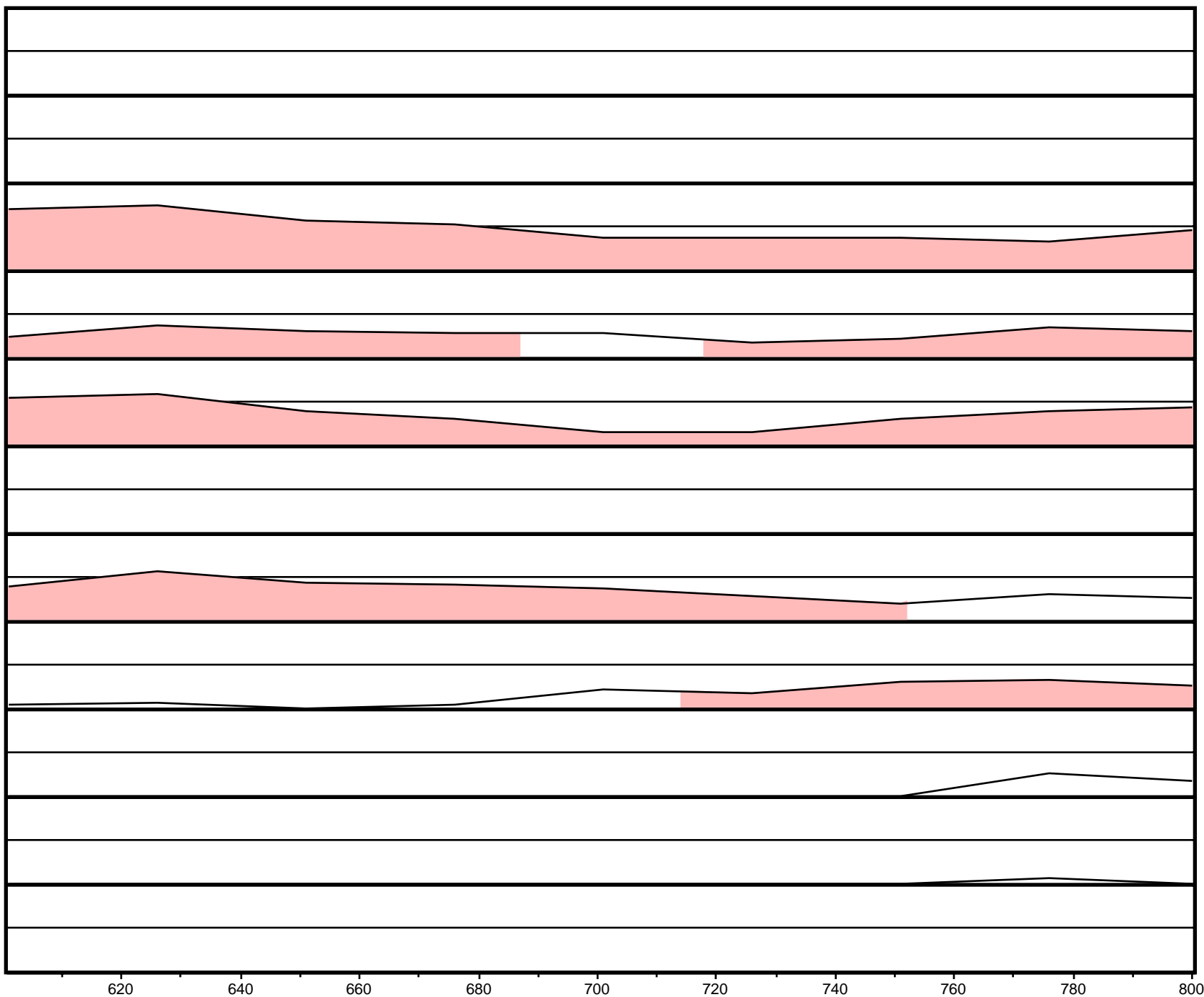
Alignment 9
Seqs: homo/celegans
Criteria: 65%, 100 bp
Regions: 1

Alignment 10
Seqs: homo/flower
Criteria: 64%, 100 bp
Regions: 3

Alignment 11
Seqs: homo/soy
Criteria: 67%, 100 bp
Regions: 1

X-axis: homo
Resolution: 25
Window size: 100 bp

gene
exon
UTR
CNS



MAVID Alignment - HOMO vs. All

Alignment 1
Seqs: homo/pig
Criteria: 92%, 100 bp
Regions: 3

Alignment 2
Seqs: homo/cow
Criteria: 89%, 100 bp
Regions: 3

Alignment 3
Seqs: homo/mouse
Criteria: 87%, 100 bp
Regions: 5

Alignment 4
Seqs: homo/frog
Criteria: 76%, 100 bp
Regions: 7

Alignment 5
Seqs: homo/rat
Criteria: 87%, 100 bp
Regions: 6

Alignment 6
Seqs: homo/trout
Criteria: 77%, 100 bp
Regions: 1

Alignment 7
Seqs: homo/danio
Criteria: 77%, 100 bp
Regions: 6

Alignment 8
Seqs: homo/fly
Criteria: 68%, 100 bp
Regions: 5

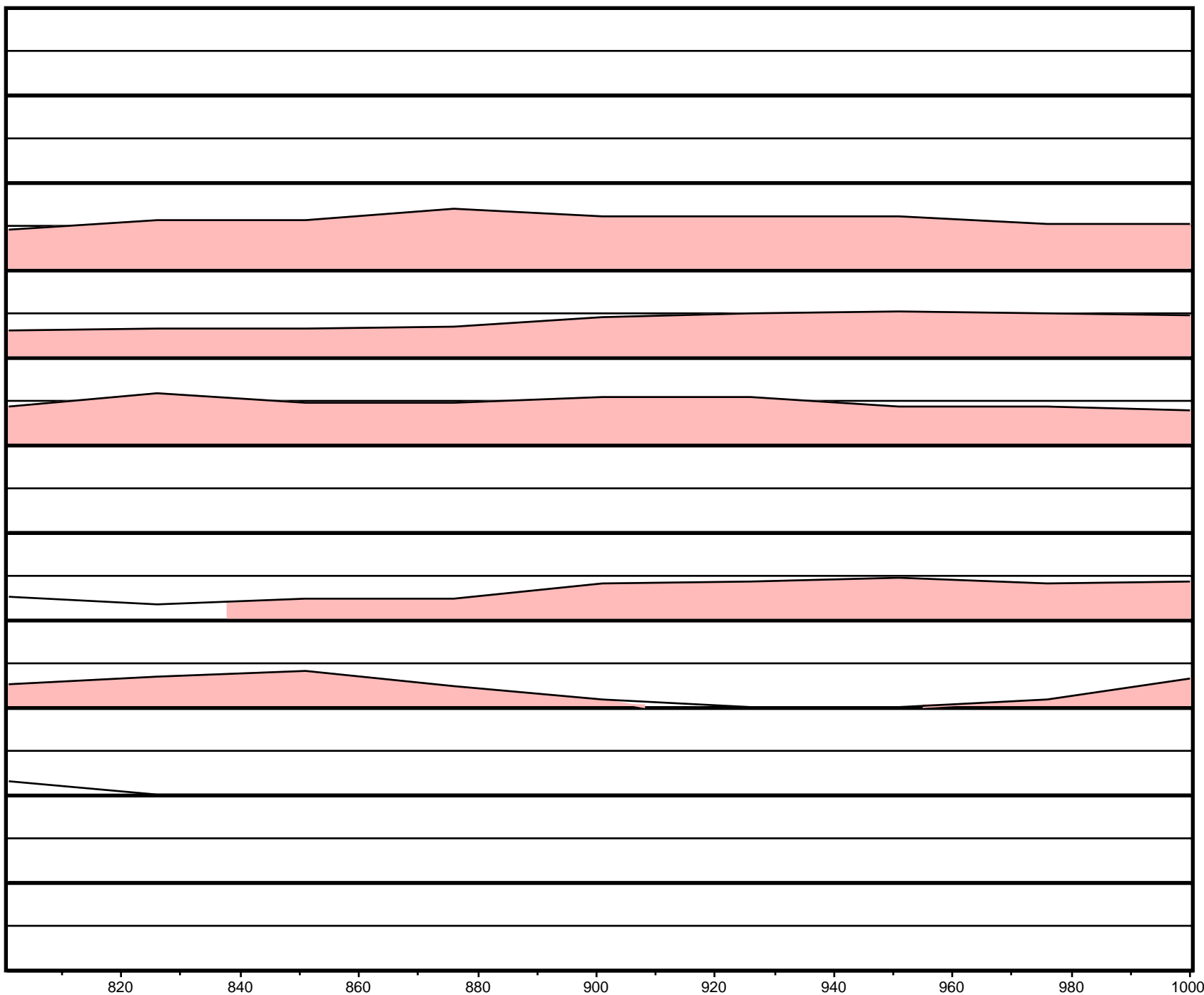
Alignment 9
Seqs: homo/celegans
Criteria: 65%, 100 bp
Regions: 1

Alignment 10
Seqs: homo/flower
Criteria: 64%, 100 bp
Regions: 3

Alignment 11
Seqs: homo/soy
Criteria: 67%, 100 bp
Regions: 1

X-axis: homo
Resolution: 25
Window size: 100 bp

gene
 exon
 UTR
 CNS



MAVID Alignment - HOMO vs. All

Alignment 1
Seqs: homo/pig
Criteria: 92%, 100 bp
Regions: 3

Alignment 2
Seqs: homo/cow
Criteria: 89%, 100 bp
Regions: 3

Alignment 3
Seqs: homo/mouse
Criteria: 87%, 100 bp
Regions: 5

Alignment 4
Seqs: homo/frog
Criteria: 76%, 100 bp
Regions: 7

Alignment 5
Seqs: homo/rat
Criteria: 87%, 100 bp
Regions: 6

Alignment 6
Seqs: homo/trout
Criteria: 77%, 100 bp
Regions: 1

Alignment 7
Seqs: homo/danio
Criteria: 77%, 100 bp
Regions: 6

Alignment 8
Seqs: homo/fly
Criteria: 68%, 100 bp
Regions: 5

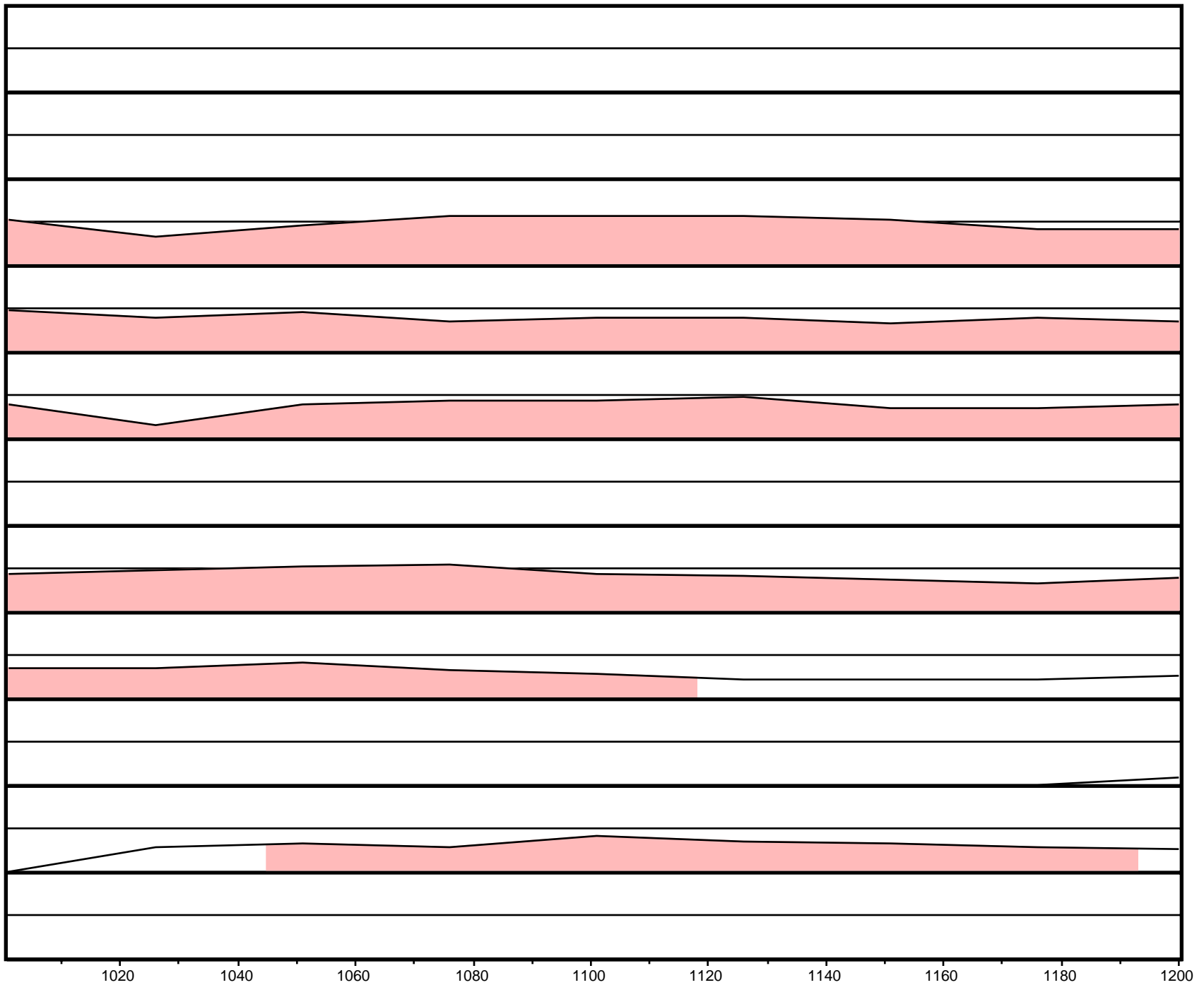
Alignment 9
Seqs: homo/celegans
Criteria: 65%, 100 bp
Regions: 1

Alignment 10
Seqs: homo/flower
Criteria: 64%, 100 bp
Regions: 3

Alignment 11
Seqs: homo/soy
Criteria: 67%, 100 bp
Regions: 1

X-axis: homo
Resolution: 25
Window size: 100 bp

gene
exon
UTR
CNS



MAVID Alignment - HOMO vs. All

Alignment 1
Seqs: homo/pig
Criteria: 92%, 100 bp
Regions: 3

Alignment 2
Seqs: homo/cow
Criteria: 89%, 100 bp
Regions: 3

Alignment 3
Seqs: homo/mouse
Criteria: 87%, 100 bp
Regions: 5

Alignment 4
Seqs: homo/frog
Criteria: 76%, 100 bp
Regions: 7

Alignment 5
Seqs: homo/rat
Criteria: 87%, 100 bp
Regions: 6

Alignment 6
Seqs: homo/trout
Criteria: 77%, 100 bp
Regions: 1

Alignment 7
Seqs: homo/danio
Criteria: 77%, 100 bp
Regions: 6

Alignment 8
Seqs: homo/fly
Criteria: 68%, 100 bp
Regions: 5

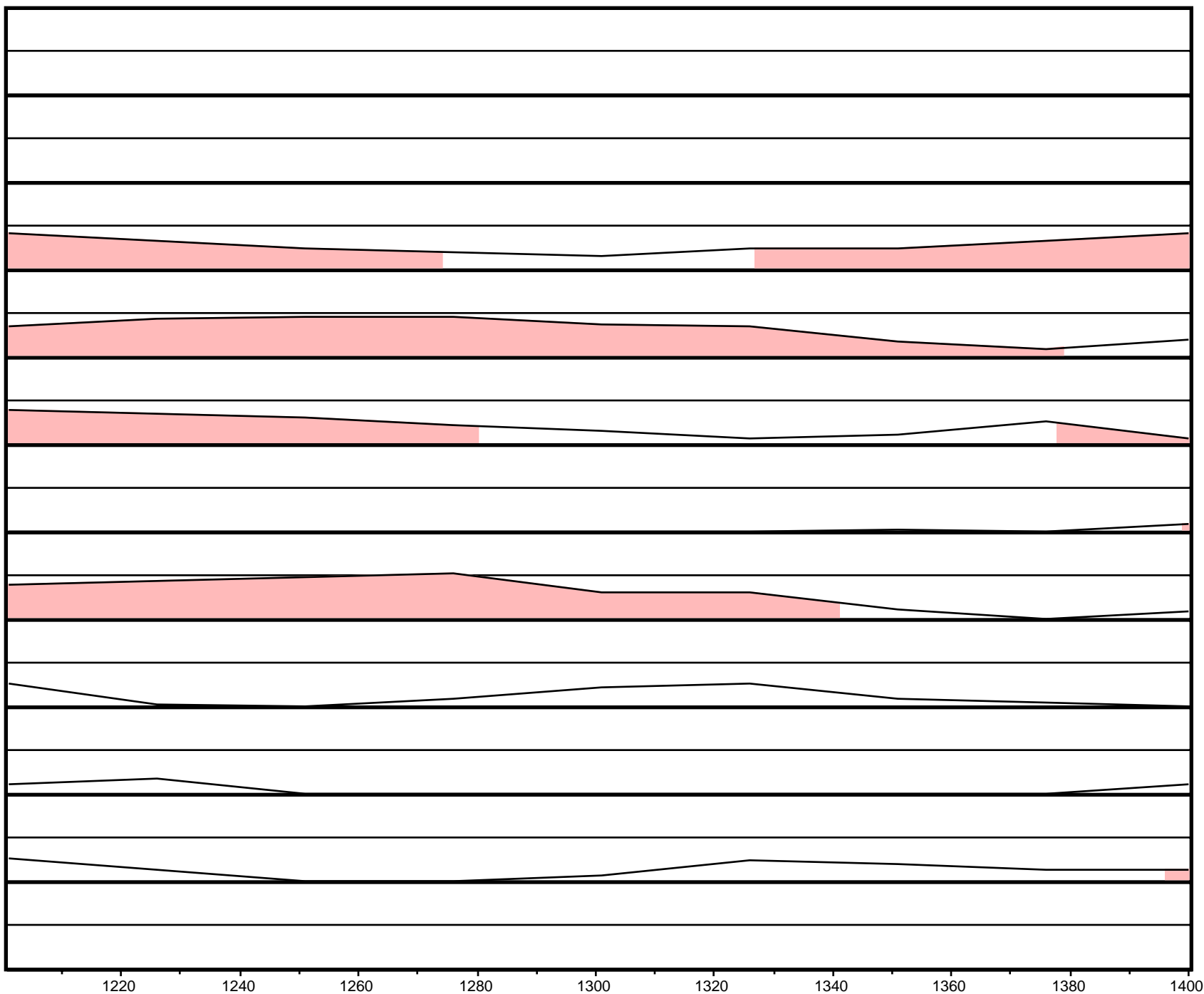
Alignment 9
Seqs: homo/celegans
Criteria: 65%, 100 bp
Regions: 1

Alignment 10
Seqs: homo/flower
Criteria: 64%, 100 bp
Regions: 3

Alignment 11
Seqs: homo/soy
Criteria: 67%, 100 bp
Regions: 1

X-axis: homo
Resolution: 25
Window size: 100 bp

gene
 exon
 UTR
 CNS



MAVID Alignment - HOMO vs. All

Alignment 1
Seqs: homo/pig
Criteria: 92%, 100 bp
Regions: 3

Alignment 2
Seqs: homo/cow
Criteria: 89%, 100 bp
Regions: 3

Alignment 3
Seqs: homo/mouse
Criteria: 87%, 100 bp
Regions: 5

Alignment 4
Seqs: homo/frog
Criteria: 76%, 100 bp
Regions: 7

Alignment 5
Seqs: homo/rat
Criteria: 87%, 100 bp
Regions: 6

Alignment 6
Seqs: homo/trout
Criteria: 77%, 100 bp
Regions: 1

Alignment 7
Seqs: homo/danio
Criteria: 77%, 100 bp
Regions: 6

Alignment 8
Seqs: homo/fly
Criteria: 68%, 100 bp
Regions: 5

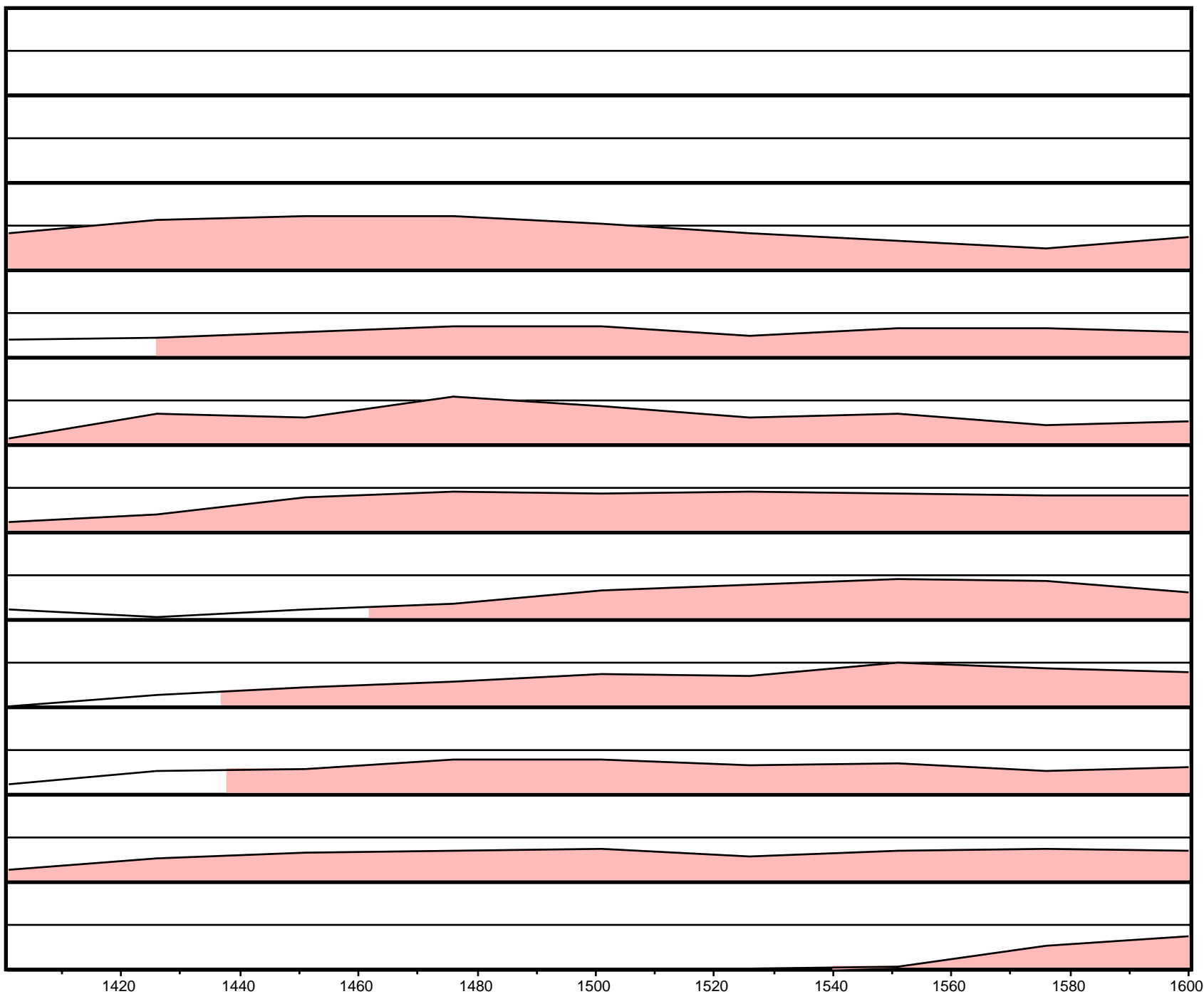
Alignment 9
Seqs: homo/celegans
Criteria: 65%, 100 bp
Regions: 1

Alignment 10
Seqs: homo/flower
Criteria: 64%, 100 bp
Regions: 3

Alignment 11
Seqs: homo/soy
Criteria: 67%, 100 bp
Regions: 1

X-axis: homo
Resolution: 25
Window size: 100 bp

▶ gene
■ exon
■ UTR
■ CNS



MAVID Alignment - HOMO vs. All

Alignment 1
Seqs: homo/pig
Criteria: 92%, 100 bp
Regions: 3

Alignment 2
Seqs: homo/cow
Criteria: 89%, 100 bp
Regions: 3

Alignment 3
Seqs: homo/mouse
Criteria: 87%, 100 bp
Regions: 5

Alignment 4
Seqs: homo/frog
Criteria: 76%, 100 bp
Regions: 7

Alignment 5
Seqs: homo/rat
Criteria: 87%, 100 bp
Regions: 6

Alignment 6
Seqs: homo/trout
Criteria: 77%, 100 bp
Regions: 1

Alignment 7
Seqs: homo/danio
Criteria: 77%, 100 bp
Regions: 6

Alignment 8
Seqs: homo/fly
Criteria: 68%, 100 bp
Regions: 5

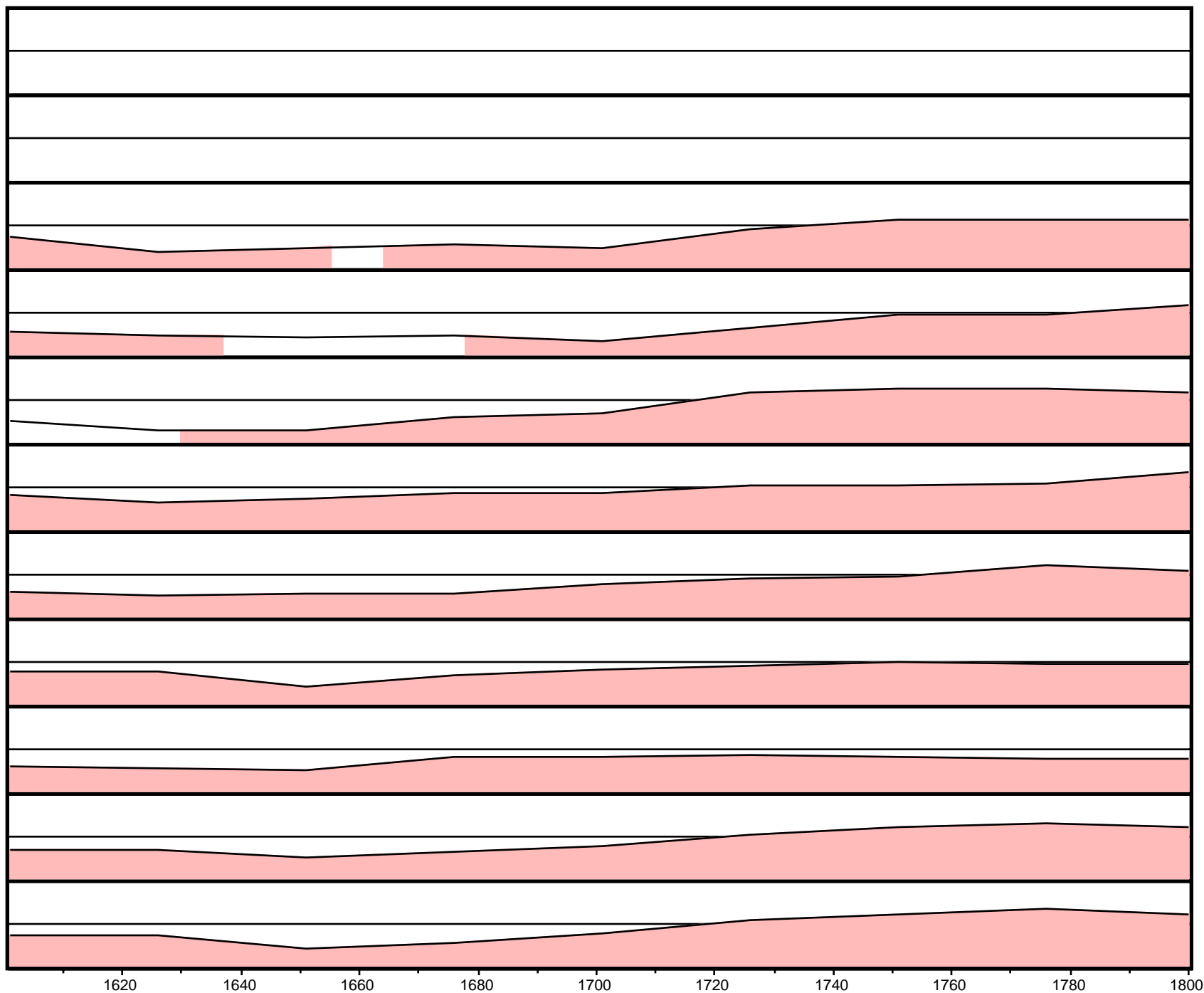
Alignment 9
Seqs: homo/celegans
Criteria: 65%, 100 bp
Regions: 1

Alignment 10
Seqs: homo/flower
Criteria: 64%, 100 bp
Regions: 3

Alignment 11
Seqs: homo/soy
Criteria: 67%, 100 bp
Regions: 1

X-axis: homo
Resolution: 25
Window size: 100 bp

► gene
■ exon
■ UTR
■ CNS



MAVID Alignment - HOMO vs. All

Alignment 1
Seqs: homo/pig
Criteria: 92%, 100 bp
Regions: 3

Alignment 2
Seqs: homo/cow
Criteria: 89%, 100 bp
Regions: 3

Alignment 3
Seqs: homo/mouse
Criteria: 87%, 100 bp
Regions: 5

Alignment 4
Seqs: homo/frog
Criteria: 76%, 100 bp
Regions: 7

Alignment 5
Seqs: homo/rat
Criteria: 87%, 100 bp
Regions: 6

Alignment 6
Seqs: homo/trout
Criteria: 77%, 100 bp
Regions: 1

Alignment 7
Seqs: homo/danio
Criteria: 77%, 100 bp
Regions: 6

Alignment 8
Seqs: homo/fly
Criteria: 68%, 100 bp
Regions: 5

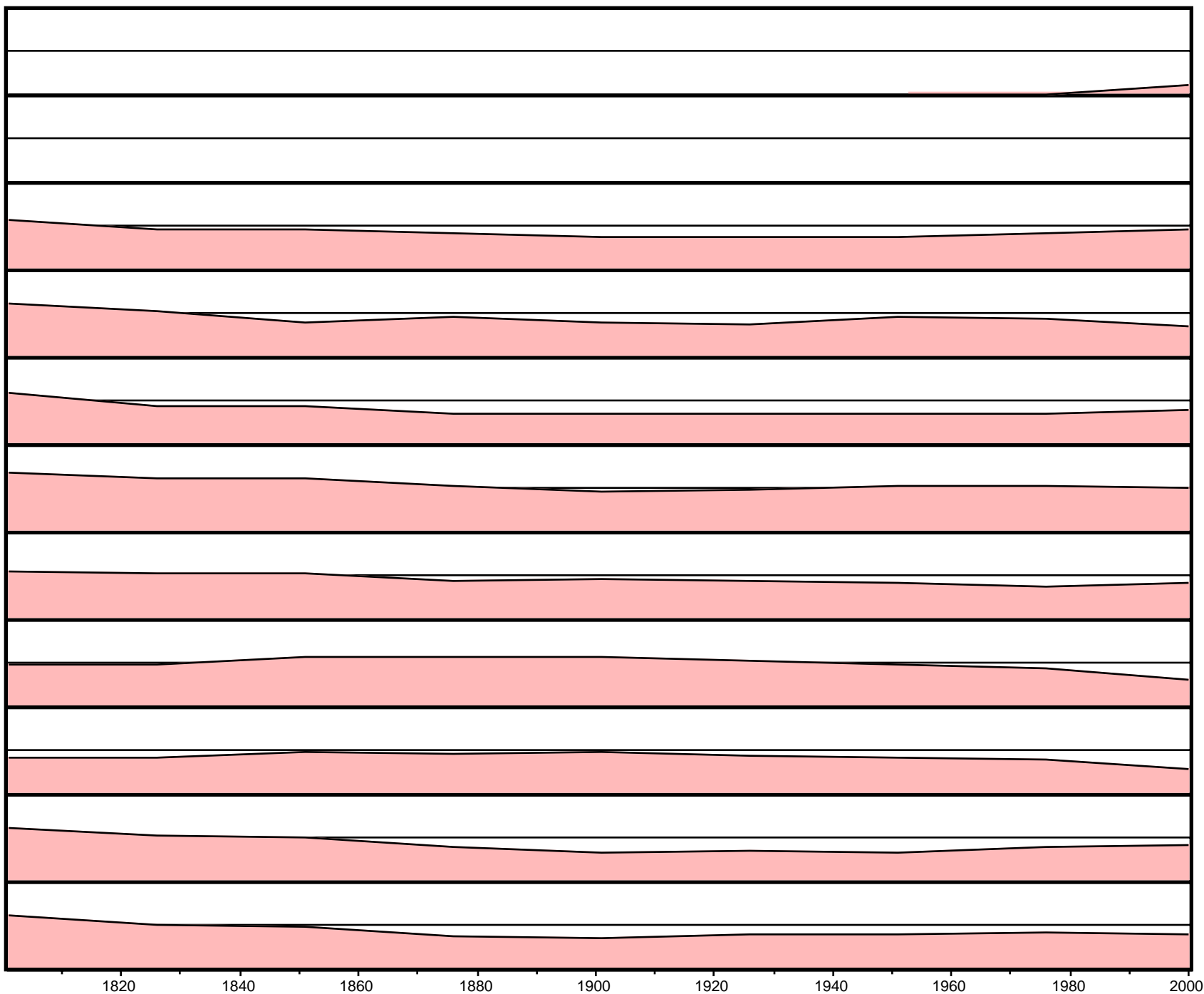
Alignment 9
Seqs: homo/celegans
Criteria: 65%, 100 bp
Regions: 1

Alignment 10
Seqs: homo/flower
Criteria: 64%, 100 bp
Regions: 3

Alignment 11
Seqs: homo/soy
Criteria: 67%, 100 bp
Regions: 1

X-axis: homo
Resolution: 25
Window size: 100 bp

gene
exon
UTR
CNS



MAVID Alignment - HOMO vs. All

Alignment 1
Seqs: homo/pig
Criteria: 92%, 100 bp
Regions: 3

Alignment 2
Seqs: homo/cow
Criteria: 89%, 100 bp
Regions: 3

Alignment 3
Seqs: homo/mouse
Criteria: 87%, 100 bp
Regions: 5

Alignment 4
Seqs: homo/frog
Criteria: 76%, 100 bp
Regions: 7

Alignment 5
Seqs: homo/rat
Criteria: 87%, 100 bp
Regions: 6

Alignment 6
Seqs: homo/trout
Criteria: 77%, 100 bp
Regions: 1

Alignment 7
Seqs: homo/danio
Criteria: 77%, 100 bp
Regions: 6

Alignment 8
Seqs: homo/fly
Criteria: 68%, 100 bp
Regions: 5

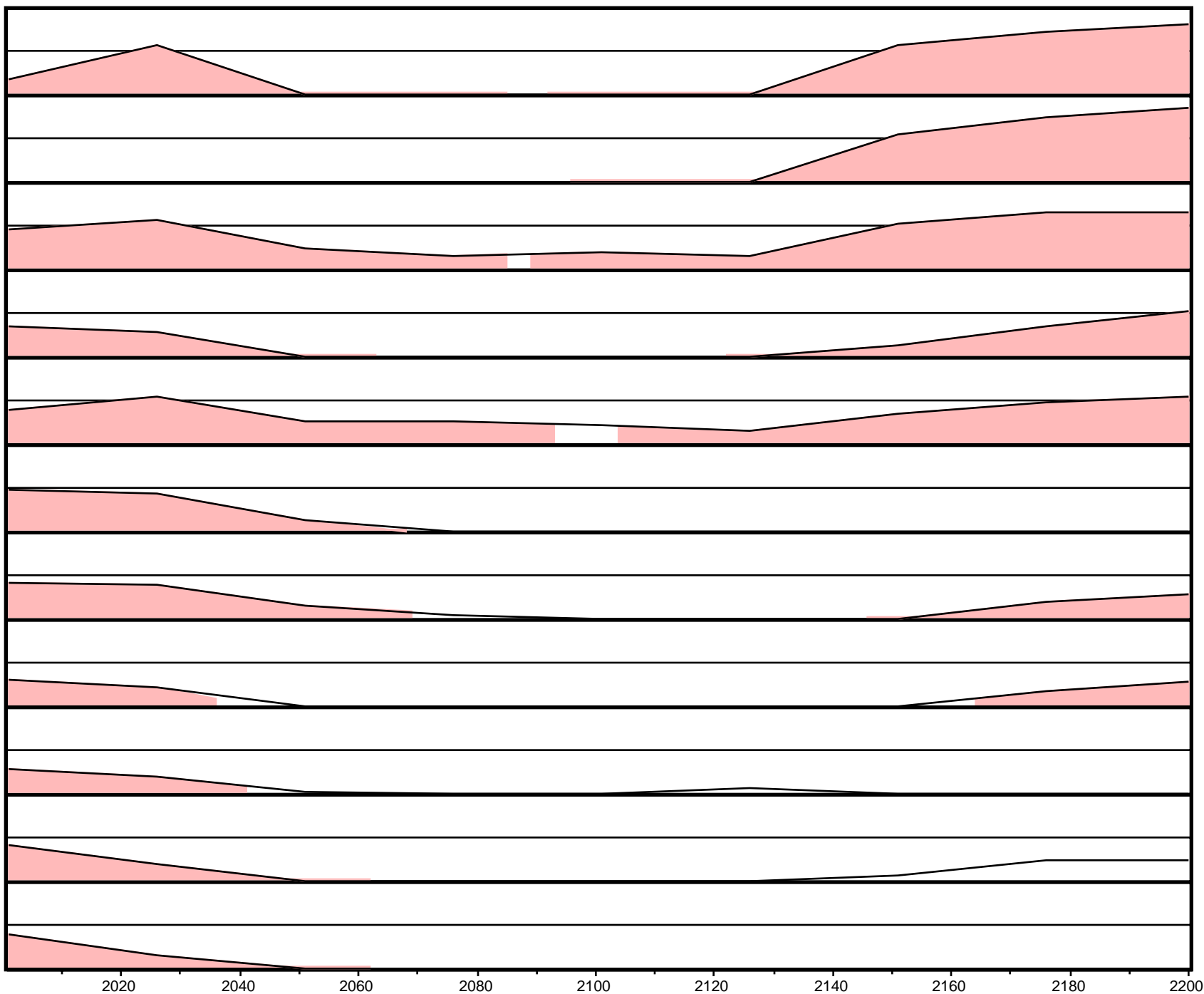
Alignment 9
Seqs: homo/celegans
Criteria: 65%, 100 bp
Regions: 1

Alignment 10
Seqs: homo/flower
Criteria: 64%, 100 bp
Regions: 3

Alignment 11
Seqs: homo/soy
Criteria: 67%, 100 bp
Regions: 1

X-axis: homo
Resolution: 25
Window size: 100 bp

gene
exon
UTR
CNS



MAVID Alignment - HOMO vs. All

Alignment 1
Seqs: homo/pig
Criteria: 92%, 100 bp
Regions: 3

Alignment 2
Seqs: homo/cow
Criteria: 89%, 100 bp
Regions: 3

Alignment 3
Seqs: homo/mouse
Criteria: 87%, 100 bp
Regions: 5

Alignment 4
Seqs: homo/frog
Criteria: 76%, 100 bp
Regions: 7

Alignment 5
Seqs: homo/rat
Criteria: 87%, 100 bp
Regions: 6

Alignment 6
Seqs: homo/trout
Criteria: 77%, 100 bp
Regions: 1

Alignment 7
Seqs: homo/danio
Criteria: 77%, 100 bp
Regions: 6

Alignment 8
Seqs: homo/fly
Criteria: 68%, 100 bp
Regions: 5

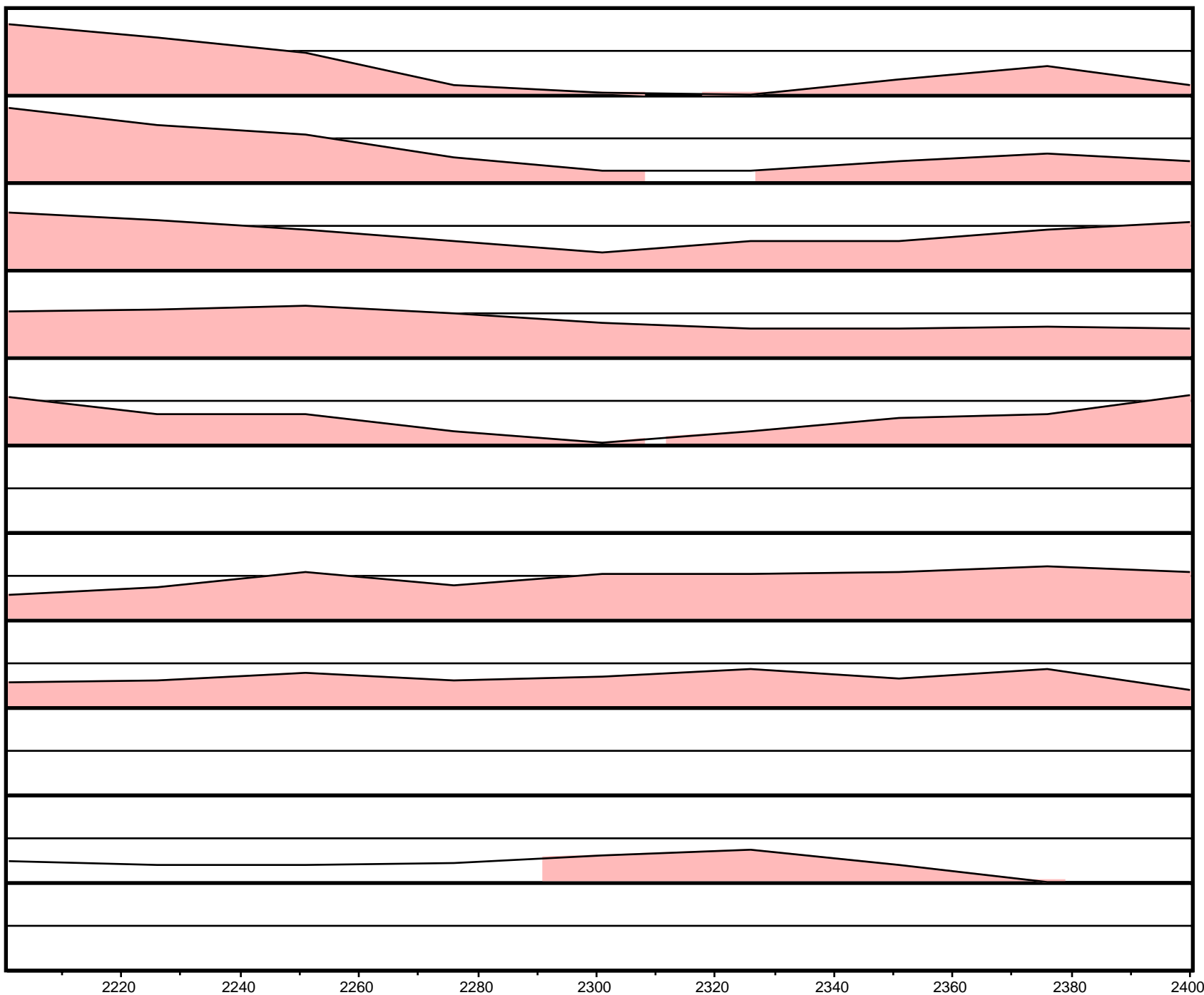
Alignment 9
Seqs: homo/celegans
Criteria: 65%, 100 bp
Regions: 1

Alignment 10
Seqs: homo/flower
Criteria: 64%, 100 bp
Regions: 3

Alignment 11
Seqs: homo/soy
Criteria: 67%, 100 bp
Regions: 1

X-axis: homo
Resolution: 25
Window size: 100 bp

gene
 exon
 UTR
 CNS



MAVID Alignment - HOMO vs. All

Alignment 1
Seqs: homo/pig
Criteria: 92%, 100 bp
Regions: 3

Alignment 2
Seqs: homo/cow
Criteria: 89%, 100 bp
Regions: 3

Alignment 3
Seqs: homo/mouse
Criteria: 87%, 100 bp
Regions: 5

Alignment 4
Seqs: homo/frog
Criteria: 76%, 100 bp
Regions: 7

Alignment 5
Seqs: homo/rat
Criteria: 87%, 100 bp
Regions: 6

Alignment 6
Seqs: homo/trout
Criteria: 77%, 100 bp
Regions: 1

Alignment 7
Seqs: homo/danio
Criteria: 77%, 100 bp
Regions: 6

Alignment 8
Seqs: homo/fly
Criteria: 68%, 100 bp
Regions: 5

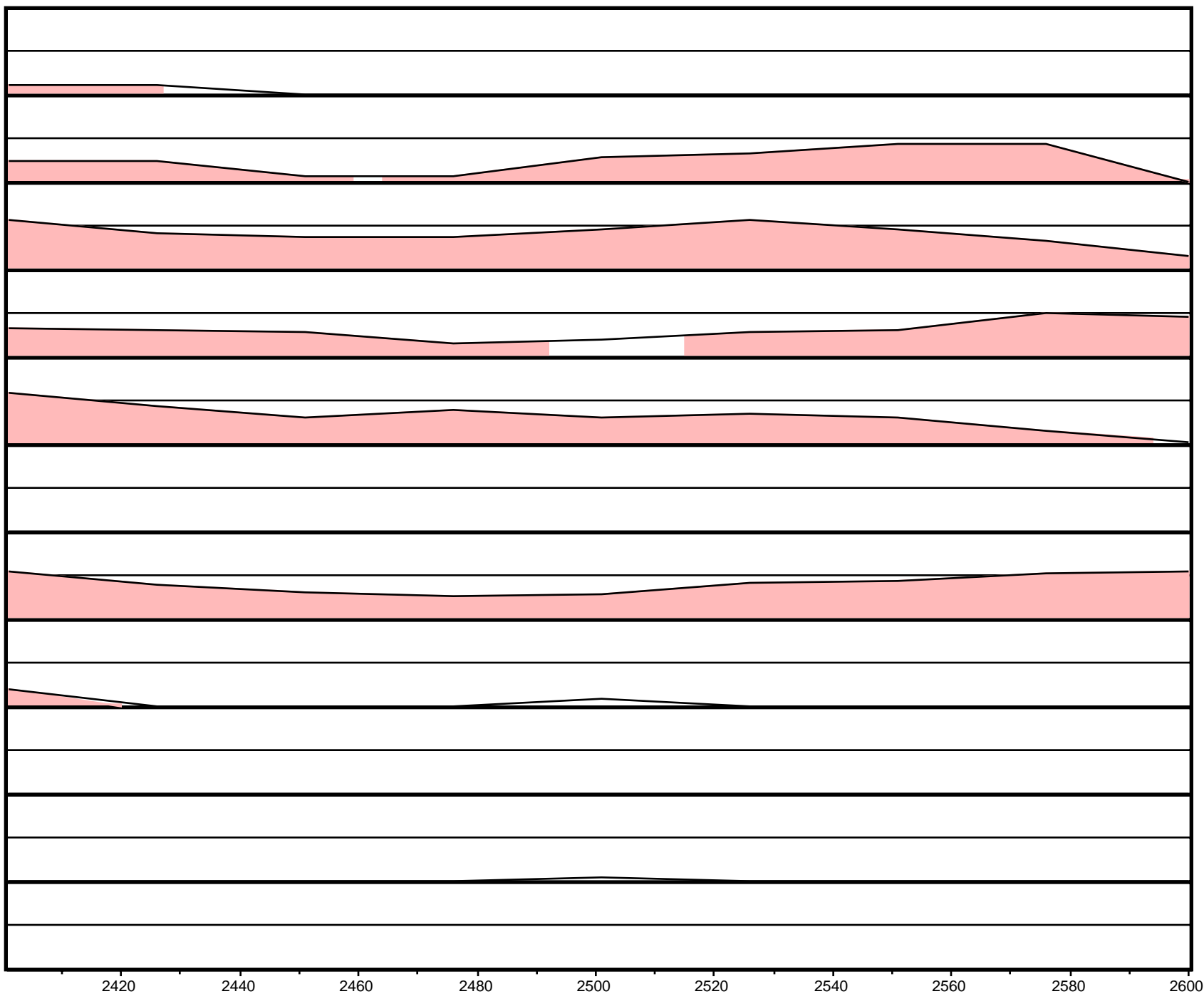
Alignment 9
Seqs: homo/celegans
Criteria: 65%, 100 bp
Regions: 1

Alignment 10
Seqs: homo/flower
Criteria: 64%, 100 bp
Regions: 3

Alignment 11
Seqs: homo/soy
Criteria: 67%, 100 bp
Regions: 1

X-axis: homo
Resolution: 25
Window size: 100 bp

▶ gene
■ exon
■ UTR
■ CNS



MAVID Alignment - HOMO vs. All

Alignment 1
Seqs: homo/pig
Criteria: 92%, 100 bp
Regions: 3

Alignment 2
Seqs: homo/cow
Criteria: 89%, 100 bp
Regions: 3

Alignment 3
Seqs: homo/mouse
Criteria: 87%, 100 bp
Regions: 5

Alignment 4
Seqs: homo/frog
Criteria: 76%, 100 bp
Regions: 7

Alignment 5
Seqs: homo/rat
Criteria: 87%, 100 bp
Regions: 6

Alignment 6
Seqs: homo/trout
Criteria: 77%, 100 bp
Regions: 1

Alignment 7
Seqs: homo/danio
Criteria: 77%, 100 bp
Regions: 6

Alignment 8
Seqs: homo/fly
Criteria: 68%, 100 bp
Regions: 5

Alignment 9
Seqs: homo/celegans
Criteria: 65%, 100 bp
Regions: 1

Alignment 10
Seqs: homo/flower
Criteria: 64%, 100 bp
Regions: 3

Alignment 11
Seqs: homo/soy
Criteria: 67%, 100 bp
Regions: 1

X-axis: homo
Resolution: 25
Window size: 100 bp

► gene
■ exon
■ UTR
■ CNS



MAVID Alignment - HOMO vs. All

Alignment 1
Seqs: homo/pig
Criteria: 92%, 100 bp
Regions: 3

Alignment 2
Seqs: homo/cow
Criteria: 89%, 100 bp
Regions: 3

Alignment 3
Seqs: homo/mouse
Criteria: 87%, 100 bp
Regions: 5

Alignment 4
Seqs: homo/frog
Criteria: 76%, 100 bp
Regions: 7

Alignment 5
Seqs: homo/rat
Criteria: 87%, 100 bp
Regions: 6

Alignment 6
Seqs: homo/trout
Criteria: 77%, 100 bp
Regions: 1

Alignment 7
Seqs: homo/danio
Criteria: 77%, 100 bp
Regions: 6

Alignment 8
Seqs: homo/fly
Criteria: 68%, 100 bp
Regions: 5

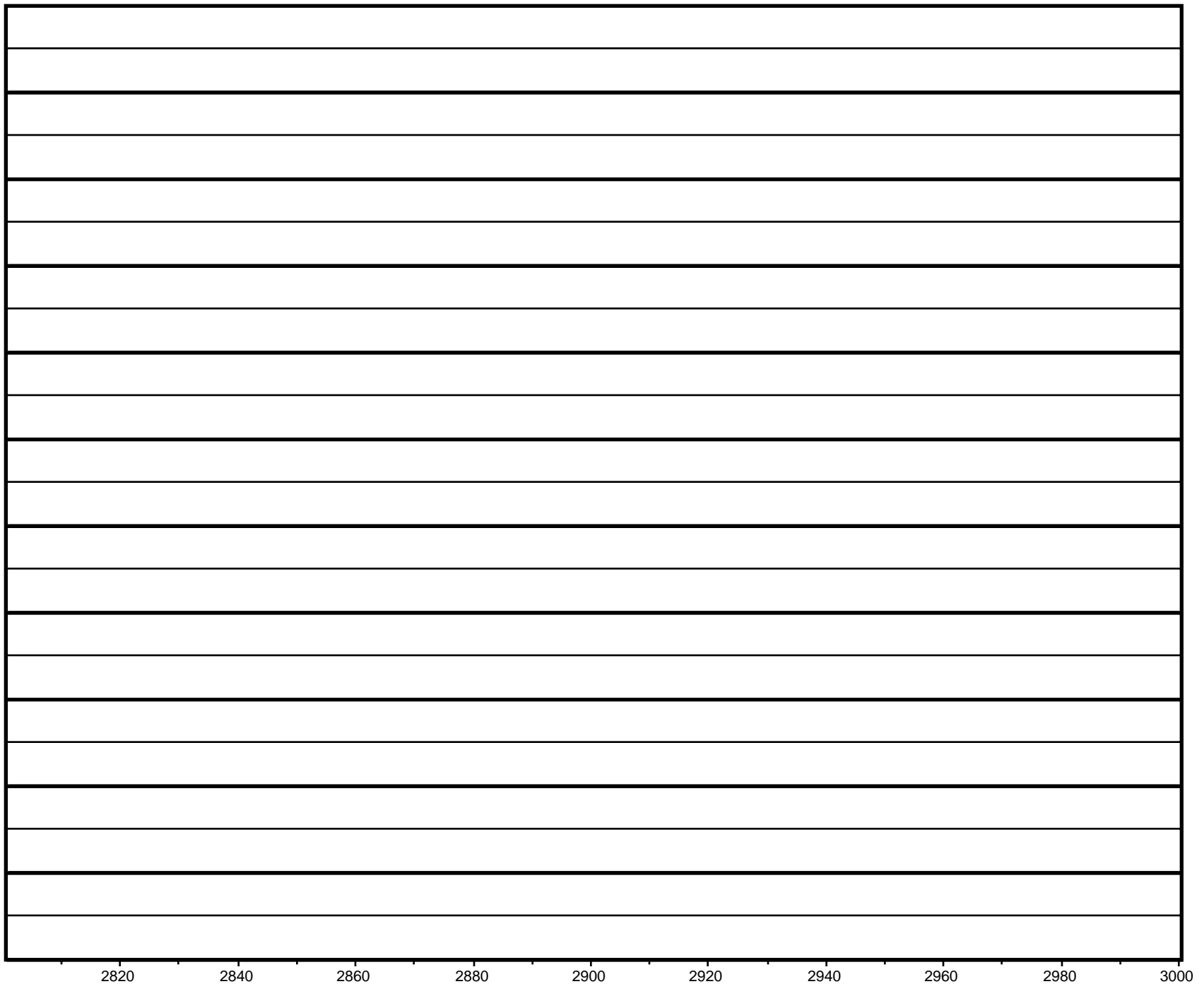
Alignment 9
Seqs: homo/celegans
Criteria: 65%, 100 bp
Regions: 1

Alignment 10
Seqs: homo/flower
Criteria: 64%, 100 bp
Regions: 3

Alignment 11
Seqs: homo/soy
Criteria: 67%, 100 bp
Regions: 1

X-axis: homo
Resolution: 25
Window size: 100 bp

► gene
■ exon
■ UTR
■ CNS



MAVID Alignment - HOMO vs. All

Alignment 1
Seqs: homo/pig
Criteria: 92%, 100 bp
Regions: 3

Alignment 2
Seqs: homo/cow
Criteria: 89%, 100 bp
Regions: 3

Alignment 3
Seqs: homo/mouse
Criteria: 87%, 100 bp
Regions: 5

Alignment 4
Seqs: homo/frog
Criteria: 76%, 100 bp
Regions: 7

Alignment 5
Seqs: homo/rat
Criteria: 87%, 100 bp
Regions: 6

Alignment 6
Seqs: homo/trout
Criteria: 77%, 100 bp
Regions: 1

Alignment 7
Seqs: homo/danio
Criteria: 77%, 100 bp
Regions: 6

Alignment 8
Seqs: homo/fly
Criteria: 68%, 100 bp
Regions: 5

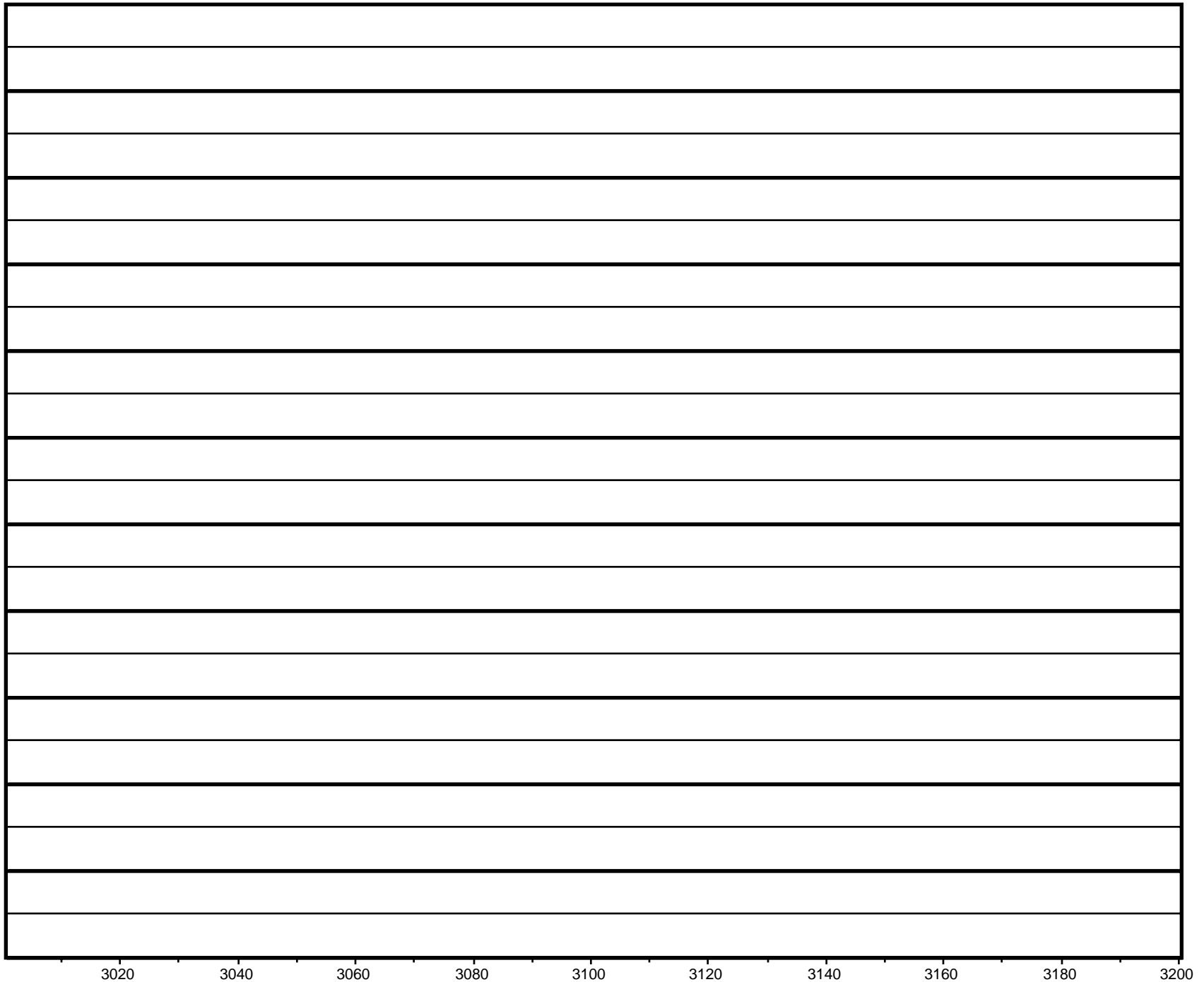
Alignment 9
Seqs: homo/celegans
Criteria: 65%, 100 bp
Regions: 1

Alignment 10
Seqs: homo/flower
Criteria: 64%, 100 bp
Regions: 3

Alignment 11
Seqs: homo/soy
Criteria: 67%, 100 bp
Regions: 1

X-axis: homo
Resolution: 25
Window size: 100 bp

► gene
■ exon
■ UTR
■ CNS



MAVID Alignment - HOMO vs. All

Alignment 1
Seqs: homo/pig
Criteria: 92%, 100 bp
Regions: 3

Alignment 2
Seqs: homo/cow
Criteria: 89%, 100 bp
Regions: 3

Alignment 3
Seqs: homo/mouse
Criteria: 87%, 100 bp
Regions: 5

Alignment 4
Seqs: homo/frog
Criteria: 76%, 100 bp
Regions: 7

Alignment 5
Seqs: homo/rat
Criteria: 87%, 100 bp
Regions: 6

Alignment 6
Seqs: homo/trout
Criteria: 77%, 100 bp
Regions: 1

Alignment 7
Seqs: homo/danio
Criteria: 77%, 100 bp
Regions: 6

Alignment 8
Seqs: homo/fly
Criteria: 68%, 100 bp
Regions: 5

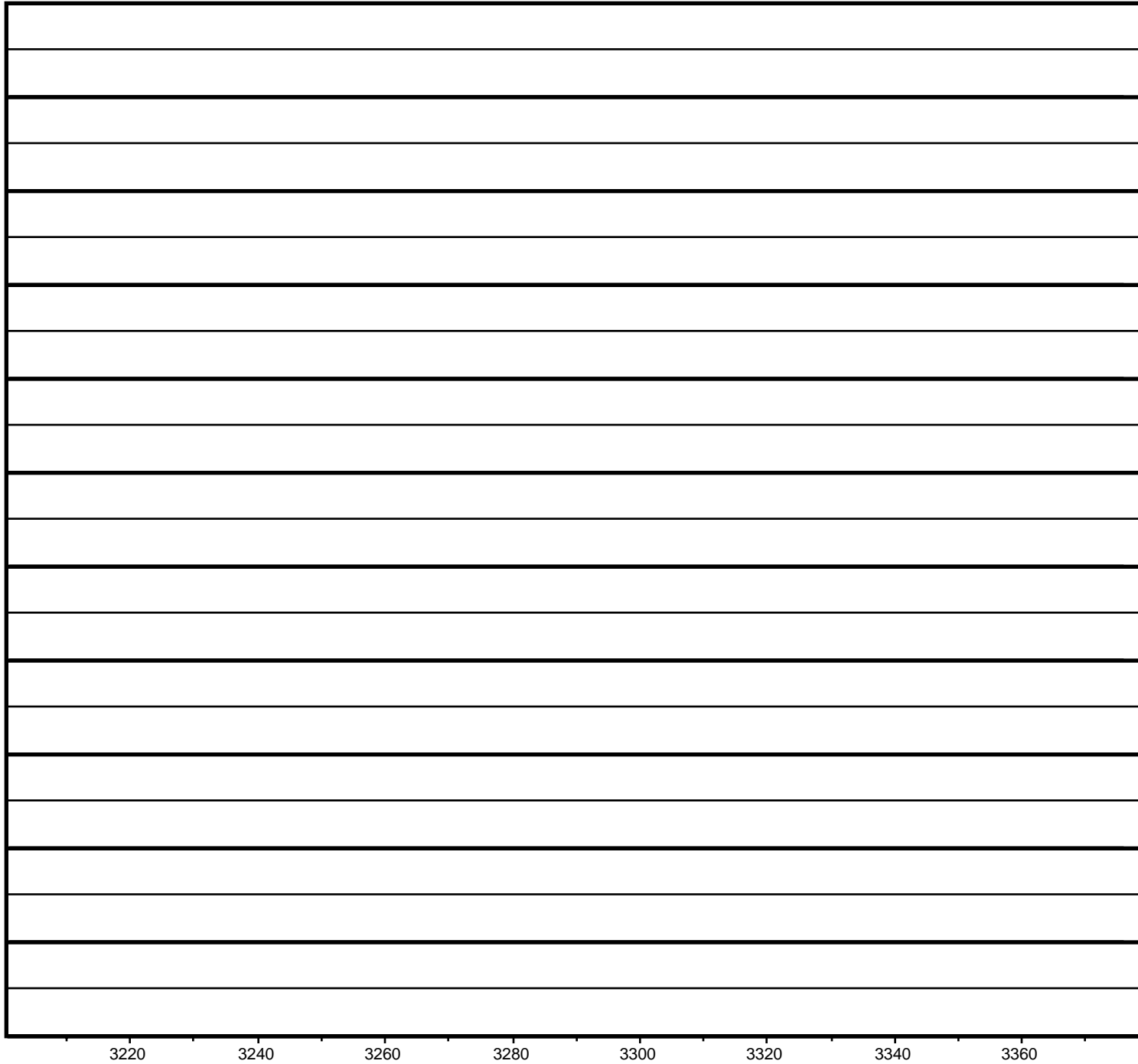
Alignment 9
Seqs: homo/celegans
Criteria: 65%, 100 bp
Regions: 1

Alignment 10
Seqs: homo/flower
Criteria: 64%, 100 bp
Regions: 3

Alignment 11
Seqs: homo/soy
Criteria: 67%, 100 bp
Regions: 1

X-axis: homo
Resolution: 25
Window size: 100 bp

► gene
■ exon
■ UTR
■ CNS



3220

3240

3260

3280

3300

3320

3340

3360