

MAVID Alignment - HOMO vs. All

Alignment 1
Seqs: homo/pig
Criteria: 62%, 100 bp
Regions: 0

Alignment 2
Seqs: homo/cow
Criteria: 63%, 100 bp
Regions: 0

Alignment 3
Seqs: homo/mouse
Criteria: 88%, 100 bp
Regions: 2

Alignment 4
Seqs: homo/frog
Criteria: 81%, 100 bp
Regions: 2

Alignment 5
Seqs: homo/rat
Criteria: 88%, 100 bp
Regions: 3

Alignment 6
Seqs: homo/trout
Criteria: 82%, 100 bp
Regions: 1

Alignment 7
Seqs: homo/danio
Criteria: 80%, 100 bp
Regions: 1

Alignment 8
Seqs: homo/fly
Criteria: 76%, 100 bp
Regions: 1

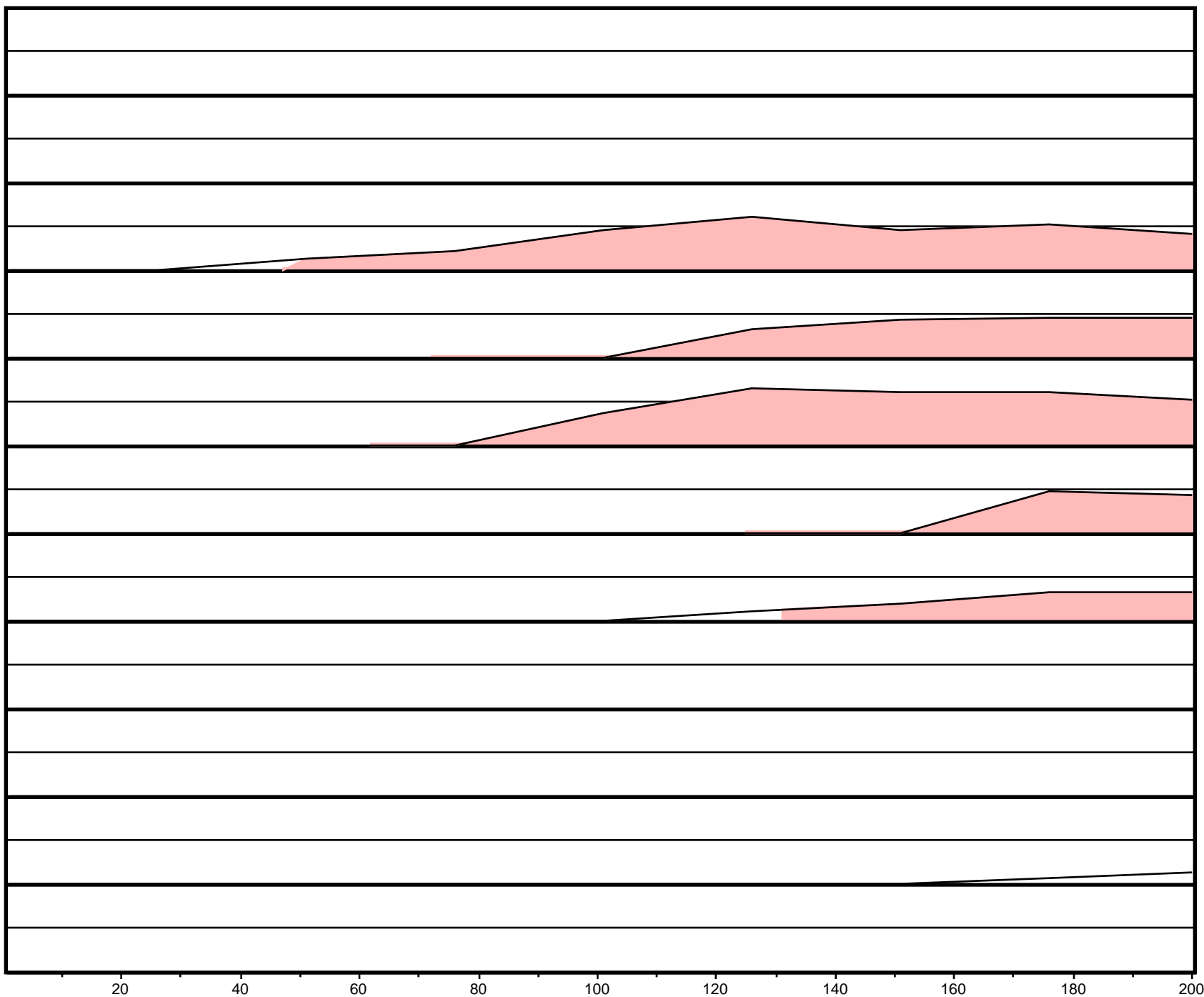
Alignment 9
Seqs: homo/celegans
Criteria: 76%, 100 bp
Regions: 3

Alignment 10
Seqs: homo/flower
Criteria: 74%, 100 bp
Regions: 2

Alignment 11
Seqs: homo/soy
Criteria: 77%, 100 bp
Regions: 2

X-axis: homo
Resolution: 25
Window size: 100 bp

gene
 exon
 UTR
 CNS



MAVID Alignment - HOMO vs. All

Alignment 1
Seqs: homo/pig
Criteria: 62%, 100 bp
Regions: 0

Alignment 2
Seqs: homo/cow
Criteria: 63%, 100 bp
Regions: 0

Alignment 3
Seqs: homo/mouse
Criteria: 88%, 100 bp
Regions: 2

Alignment 4
Seqs: homo/frog
Criteria: 81%, 100 bp
Regions: 2

Alignment 5
Seqs: homo/rat
Criteria: 88%, 100 bp
Regions: 3

Alignment 6
Seqs: homo/trout
Criteria: 82%, 100 bp
Regions: 1

Alignment 7
Seqs: homo/danio
Criteria: 80%, 100 bp
Regions: 1

Alignment 8
Seqs: homo/fly
Criteria: 76%, 100 bp
Regions: 1

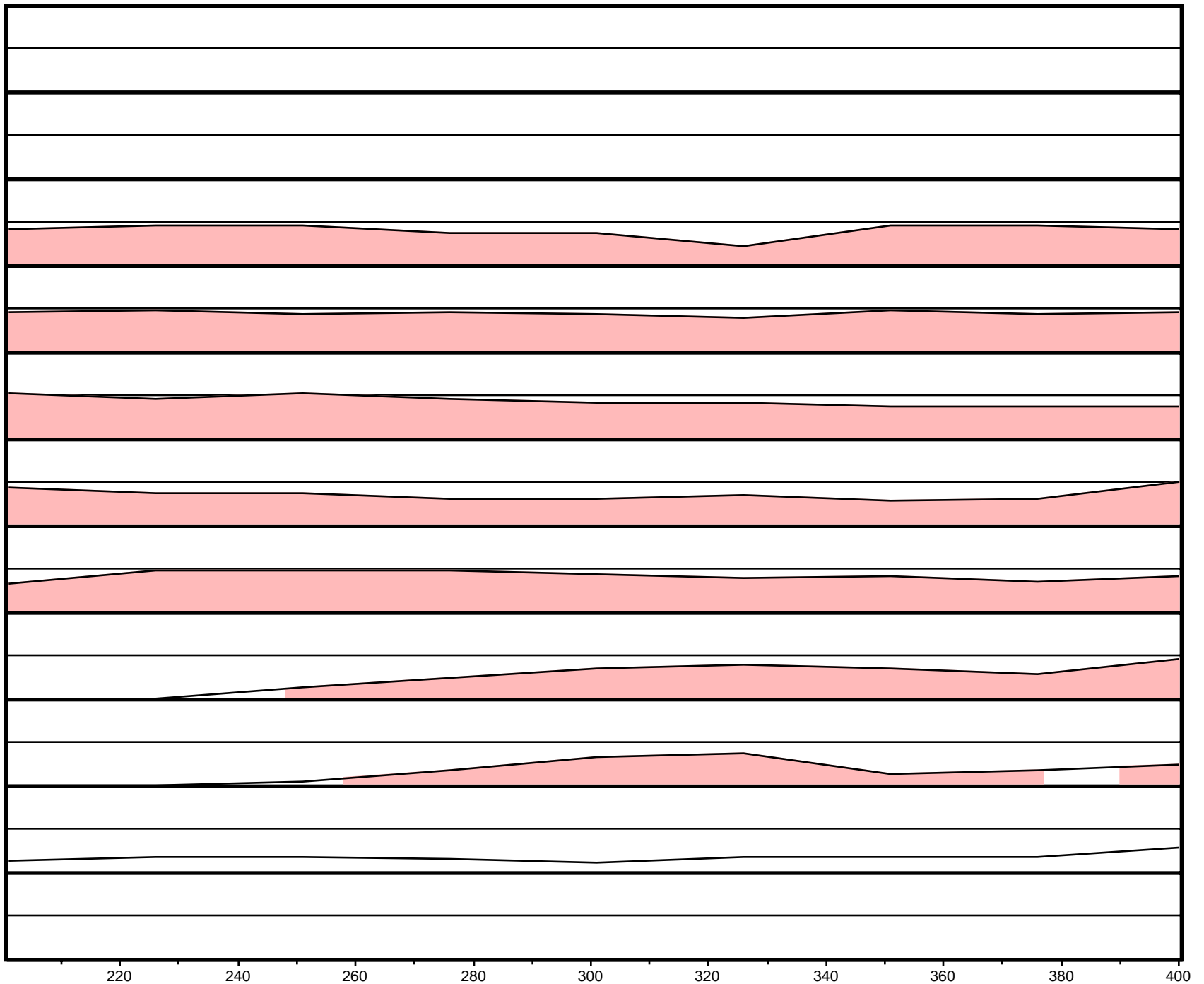
Alignment 9
Seqs: homo/celegans
Criteria: 76%, 100 bp
Regions: 3

Alignment 10
Seqs: homo/flower
Criteria: 74%, 100 bp
Regions: 2

Alignment 11
Seqs: homo/soy
Criteria: 77%, 100 bp
Regions: 2

X-axis: homo
Resolution: 25
Window size: 100 bp

► gene
■ exon
■ UTR
■ CNS



MAVID Alignment - HOMO vs. All

Alignment 1
Seqs: homo/pig
Criteria: 62%, 100 bp
Regions: 0

Alignment 2
Seqs: homo/cow
Criteria: 63%, 100 bp
Regions: 0

Alignment 3
Seqs: homo/mouse
Criteria: 88%, 100 bp
Regions: 2

Alignment 4
Seqs: homo/frog
Criteria: 81%, 100 bp
Regions: 2

Alignment 5
Seqs: homo/rat
Criteria: 88%, 100 bp
Regions: 3

Alignment 6
Seqs: homo/trout
Criteria: 82%, 100 bp
Regions: 1

Alignment 7
Seqs: homo/danio
Criteria: 80%, 100 bp
Regions: 1

Alignment 8
Seqs: homo/fly
Criteria: 76%, 100 bp
Regions: 1

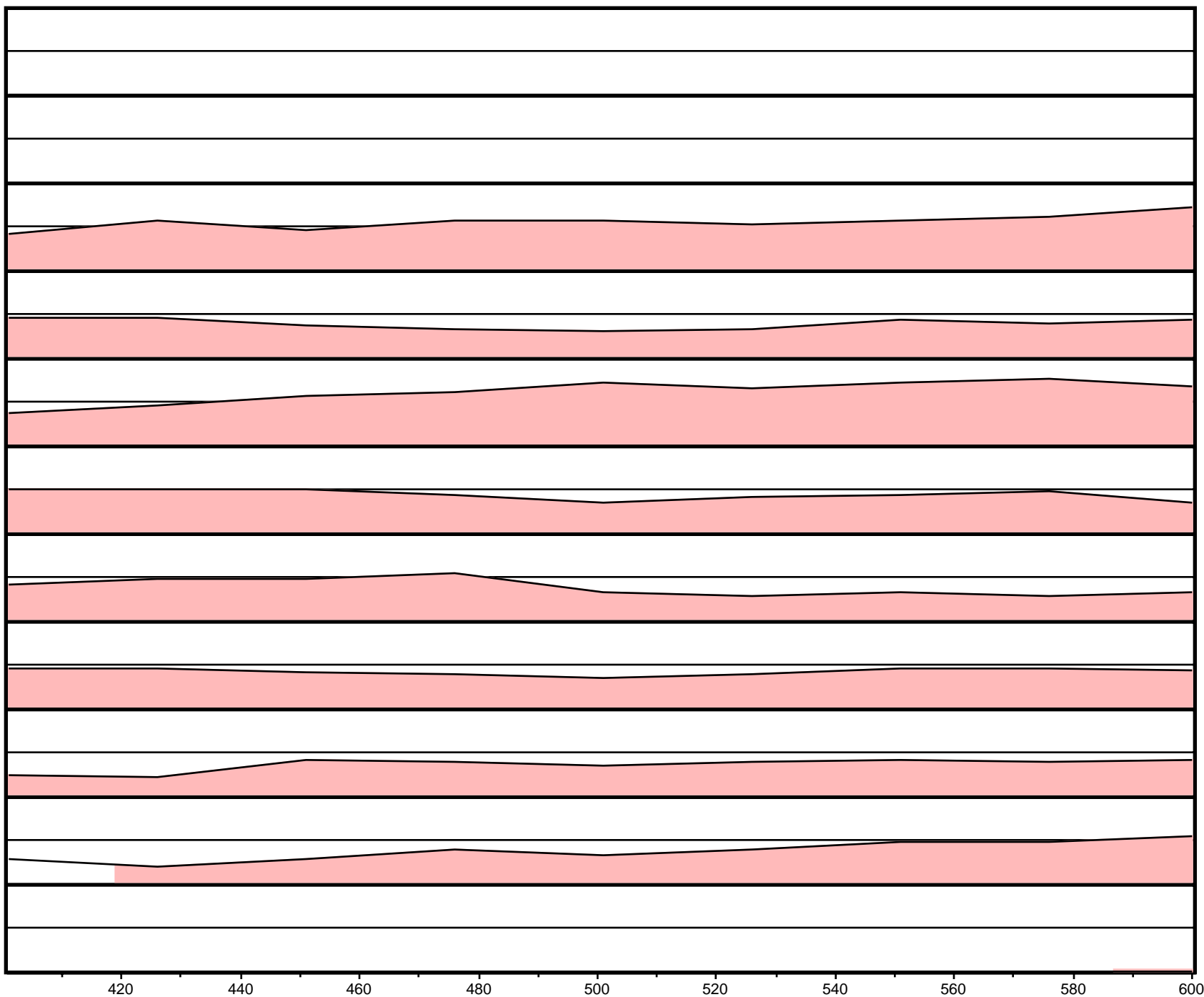
Alignment 9
Seqs: homo/celegans
Criteria: 76%, 100 bp
Regions: 3

Alignment 10
Seqs: homo/flower
Criteria: 74%, 100 bp
Regions: 2

Alignment 11
Seqs: homo/soy
Criteria: 77%, 100 bp
Regions: 2

X-axis: homo
Resolution: 25
Window size: 100 bp

► gene
■ exon
■ UTR
■ CNS



MAVID Alignment - HOMO vs. All

Alignment 1
Seqs: homo/pig
Criteria: 62%, 100 bp
Regions: 0

Alignment 2
Seqs: homo/cow
Criteria: 63%, 100 bp
Regions: 0

Alignment 3
Seqs: homo/mouse
Criteria: 88%, 100 bp
Regions: 2

Alignment 4
Seqs: homo/frog
Criteria: 81%, 100 bp
Regions: 2

Alignment 5
Seqs: homo/rat
Criteria: 88%, 100 bp
Regions: 3

Alignment 6
Seqs: homo/trout
Criteria: 82%, 100 bp
Regions: 1

Alignment 7
Seqs: homo/danio
Criteria: 80%, 100 bp
Regions: 1

Alignment 8
Seqs: homo/fly
Criteria: 76%, 100 bp
Regions: 1

Alignment 9
Seqs: homo/celegans
Criteria: 76%, 100 bp
Regions: 3

Alignment 10
Seqs: homo/flower
Criteria: 74%, 100 bp
Regions: 2

Alignment 11
Seqs: homo/soy
Criteria: 77%, 100 bp
Regions: 2

X-axis: homo
Resolution: 25
Window size: 100 bp

▶ gene
■ exon
■ UTR
■ CNS

The figure displays 11 horizontal tracks, each representing an alignment with a different species. The y-axis labels on the left provide the species, criteria, and number of regions for each alignment. The x-axis at the bottom shows genomic coordinates from 620 to 800 bp in increments of 20. A red shaded area at the bottom of the plot indicates the Conservation Score (CNS) for the Homo sequence. The tracks are separated by horizontal lines. The tracks for Alignment 1, 2, and 3 are empty, indicating no conservation. Alignment 4 shows a broad red region from approximately 610 to 800 bp. Alignment 5 shows a red region from approximately 610 to 700 bp. Alignment 6 shows a red region from approximately 610 to 700 bp. Alignment 7 shows a red region from approximately 610 to 700 bp. Alignment 8 shows a red region from approximately 610 to 640 bp. Alignment 9 shows a red region from approximately 610 to 640 bp. Alignment 10 shows a red region from approximately 610 to 800 bp. Alignment 11 shows a red region from approximately 610 to 800 bp. The legend at the bottom left indicates that the red color represents CNS (Conservation Score).

MAVID Alignment - HOMO vs. All

Alignment 1
Seqs: homo/pig
Criteria: 62%, 100 bp
Regions: 0

Alignment 2
Seqs: homo/cow
Criteria: 63%, 100 bp
Regions: 0

Alignment 3
Seqs: homo/mouse
Criteria: 88%, 100 bp
Regions: 2

Alignment 4
Seqs: homo/frog
Criteria: 81%, 100 bp
Regions: 2

Alignment 5
Seqs: homo/rat
Criteria: 88%, 100 bp
Regions: 3

Alignment 6
Seqs: homo/trout
Criteria: 82%, 100 bp
Regions: 1

Alignment 7
Seqs: homo/danio
Criteria: 80%, 100 bp
Regions: 1

Alignment 8
Seqs: homo/fly
Criteria: 76%, 100 bp
Regions: 1

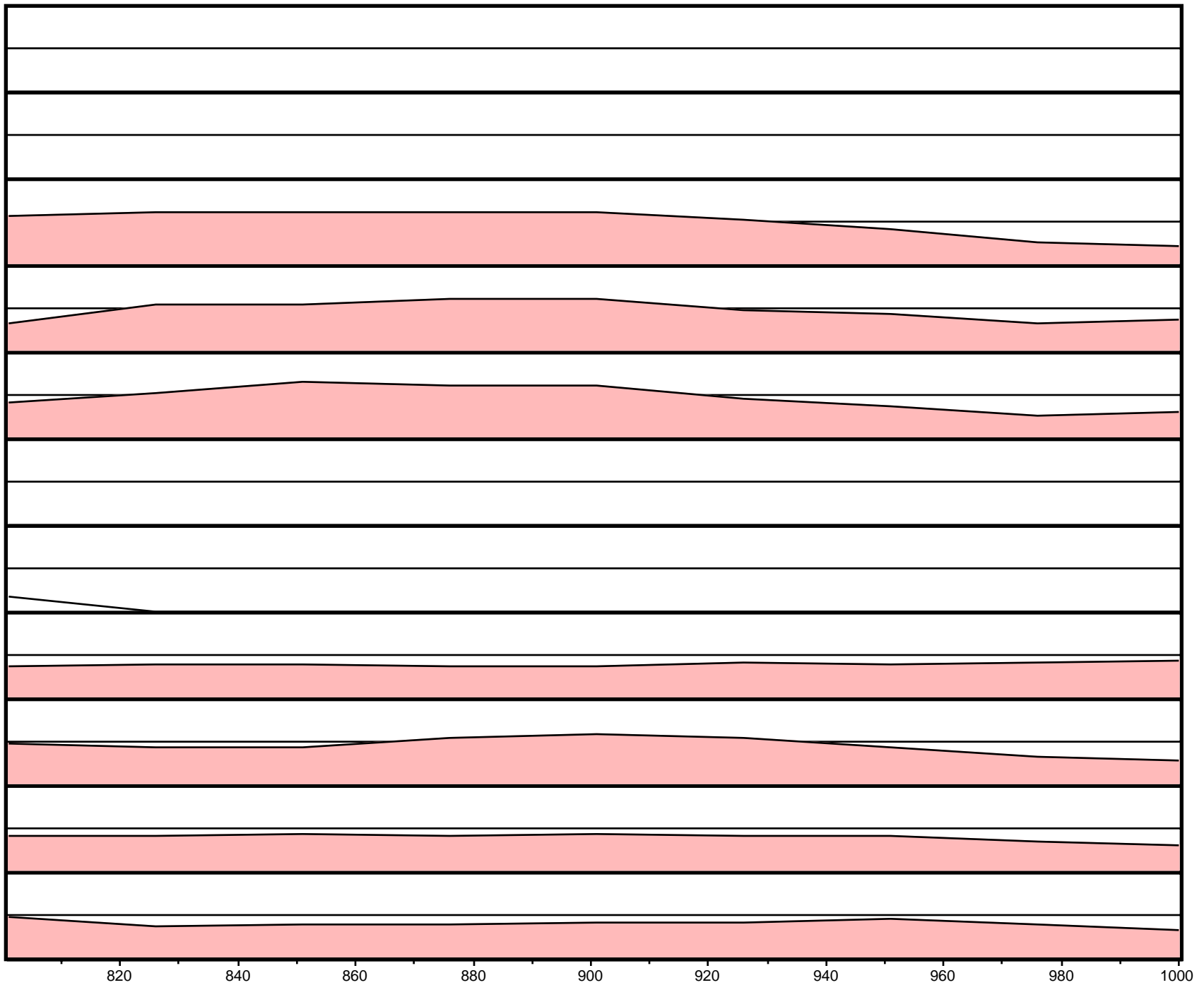
Alignment 9
Seqs: homo/celegans
Criteria: 76%, 100 bp
Regions: 3

Alignment 10
Seqs: homo/flower
Criteria: 74%, 100 bp
Regions: 2

Alignment 11
Seqs: homo/soy
Criteria: 77%, 100 bp
Regions: 2

X-axis: homo
Resolution: 25
Window size: 100 bp

► gene
■ exon
■ UTR
■ CNS



MAVID Alignment - HOMO vs. All

Alignment 1
Seqs: homo/pig
Criteria: 62%, 100 bp
Regions: 0

Alignment 2
Seqs: homo/cow
Criteria: 63%, 100 bp
Regions: 0

Alignment 3
Seqs: homo/mouse
Criteria: 88%, 100 bp
Regions: 2

Alignment 4
Seqs: homo/frog
Criteria: 81%, 100 bp
Regions: 2

Alignment 5
Seqs: homo/rat
Criteria: 88%, 100 bp
Regions: 3

Alignment 6
Seqs: homo/trout
Criteria: 82%, 100 bp
Regions: 1

Alignment 7
Seqs: homo/danio
Criteria: 80%, 100 bp
Regions: 1

Alignment 8
Seqs: homo/fly
Criteria: 76%, 100 bp
Regions: 1

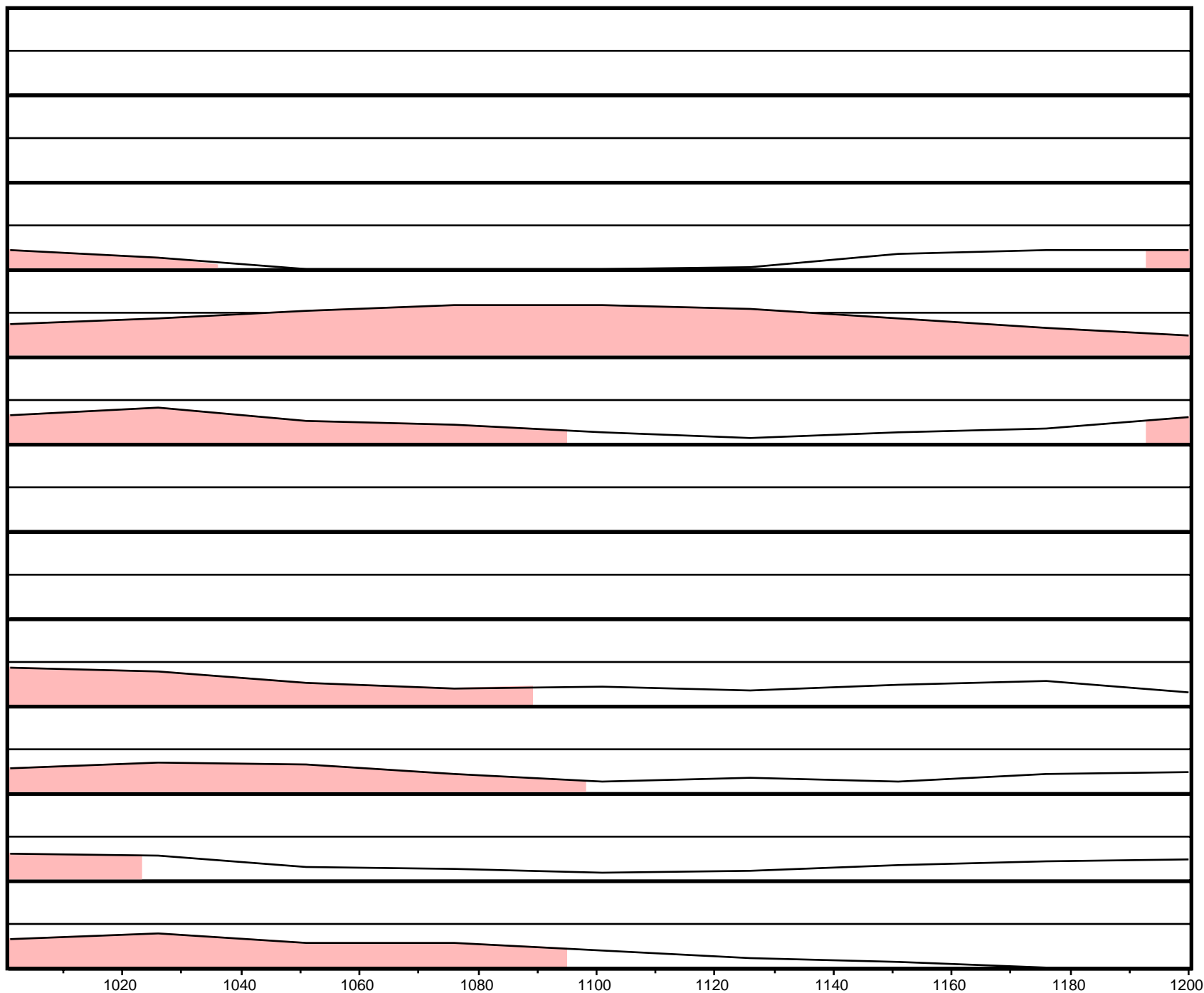
Alignment 9
Seqs: homo/celegans
Criteria: 76%, 100 bp
Regions: 3

Alignment 10
Seqs: homo/flower
Criteria: 74%, 100 bp
Regions: 2

Alignment 11
Seqs: homo/soy
Criteria: 77%, 100 bp
Regions: 2

X-axis: homo
Resolution: 25
Window size: 100 bp

gene
exon
UTR
CNS



MAVID Alignment - HOMO vs. All

Alignment 1
Seqs: homo/pig
Criteria: 62%, 100 bp
Regions: 0

Alignment 2
Seqs: homo/cow
Criteria: 63%, 100 bp
Regions: 0

Alignment 3
Seqs: homo/mouse
Criteria: 88%, 100 bp
Regions: 2

Alignment 4
Seqs: homo/frog
Criteria: 81%, 100 bp
Regions: 2

Alignment 5
Seqs: homo/rat
Criteria: 88%, 100 bp
Regions: 3

Alignment 6
Seqs: homo/trout
Criteria: 82%, 100 bp
Regions: 1

Alignment 7
Seqs: homo/danio
Criteria: 80%, 100 bp
Regions: 1

Alignment 8
Seqs: homo/fly
Criteria: 76%, 100 bp
Regions: 1

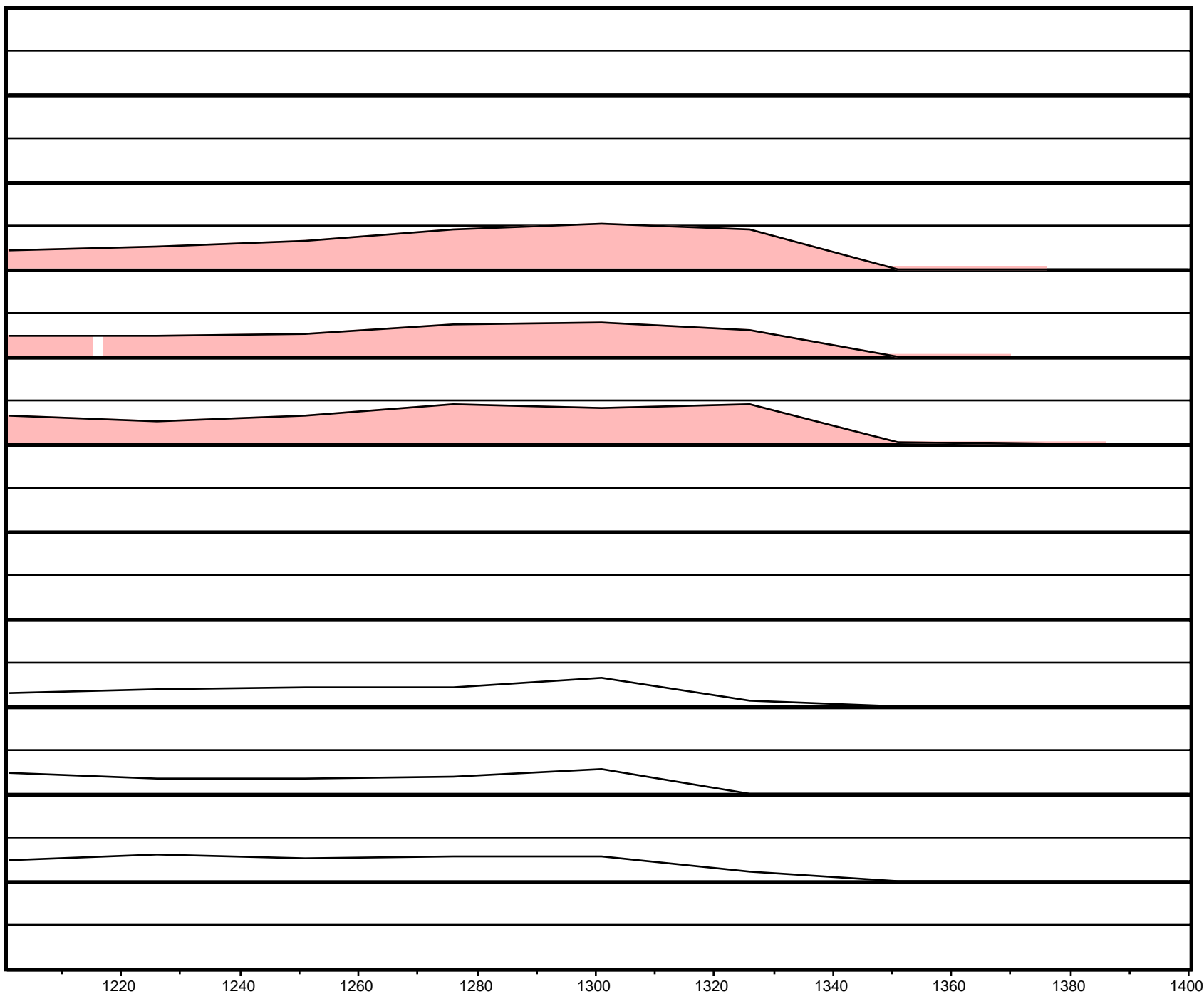
Alignment 9
Seqs: homo/celegans
Criteria: 76%, 100 bp
Regions: 3

Alignment 10
Seqs: homo/flower
Criteria: 74%, 100 bp
Regions: 2

Alignment 11
Seqs: homo/soy
Criteria: 77%, 100 bp
Regions: 2

X-axis: homo
Resolution: 25
Window size: 100 bp

► gene
■ exon
■ UTR
■ CNS



MAVID Alignment - HOMO vs. All

Alignment 1
Seqs: homo/pig
Criteria: 62%, 100 bp
Regions: 0

Alignment 2
Seqs: homo/cow
Criteria: 63%, 100 bp
Regions: 0

Alignment 3
Seqs: homo/mouse
Criteria: 88%, 100 bp
Regions: 2

Alignment 4
Seqs: homo/frog
Criteria: 81%, 100 bp
Regions: 2

Alignment 5
Seqs: homo/rat
Criteria: 88%, 100 bp
Regions: 3

Alignment 6
Seqs: homo/trout
Criteria: 82%, 100 bp
Regions: 1

Alignment 7
Seqs: homo/danio
Criteria: 80%, 100 bp
Regions: 1

Alignment 8
Seqs: homo/fly
Criteria: 76%, 100 bp
Regions: 1

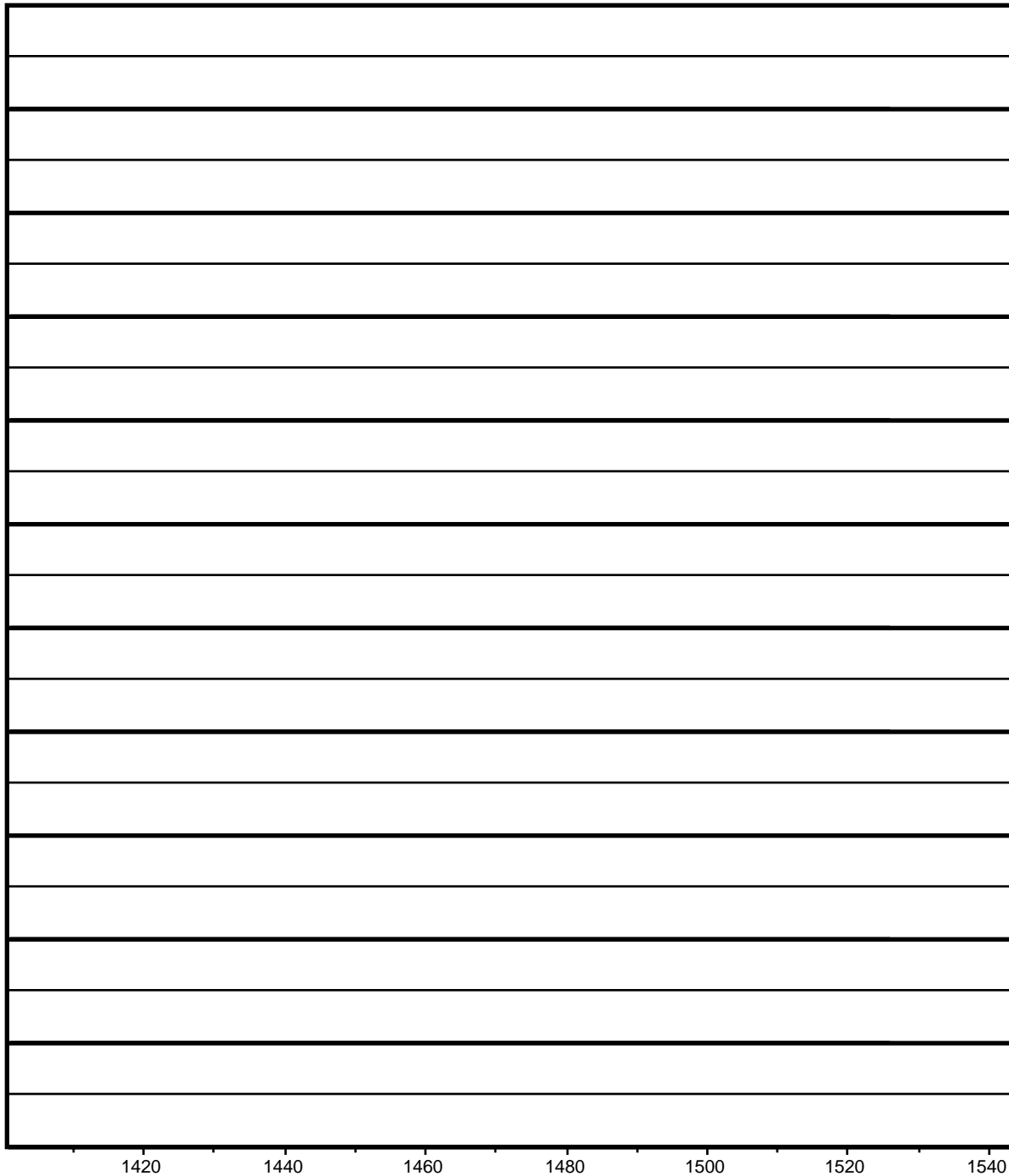
Alignment 9
Seqs: homo/celegans
Criteria: 76%, 100 bp
Regions: 3

Alignment 10
Seqs: homo/flower
Criteria: 74%, 100 bp
Regions: 2

Alignment 11
Seqs: homo/soy
Criteria: 77%, 100 bp
Regions: 2

X-axis: homo
Resolution: 25
Window size: 100 bp

► gene
■ exon
■ UTR
■ CNS



1420 1440 1460 1480 1500 1520 1540